



Engine	Cummins X15
Rated Power	391 kW (524 hp / 532 ps) @ 1,800 rpm
Net Power	375 kW (503 hp / 510 ps) @ 1,800 rpm
Standard Bucket Capacity	5.0 m ³
Maximum Digging Depth	7,625 mm
Operating Weight	75,300 kg

975F EXCAVATOR

TOUGH WORLD. TOUGH EQUIPMENT.

975F SPECIFICATIONS >>>

PERFORMANCE

Operating Weight	75,300 kg
Std. Bucket Heaped Capacity (Referenced)	5.0 m ³
Maximum Travel Speed	4.7 km/h
Swing Speed	7.13 rpm
Drawbar Pull	495 kN
Bucket Digging Force (ISO)	397 kN
Arm Digging Force (ISO)	349 kN

ENGINE

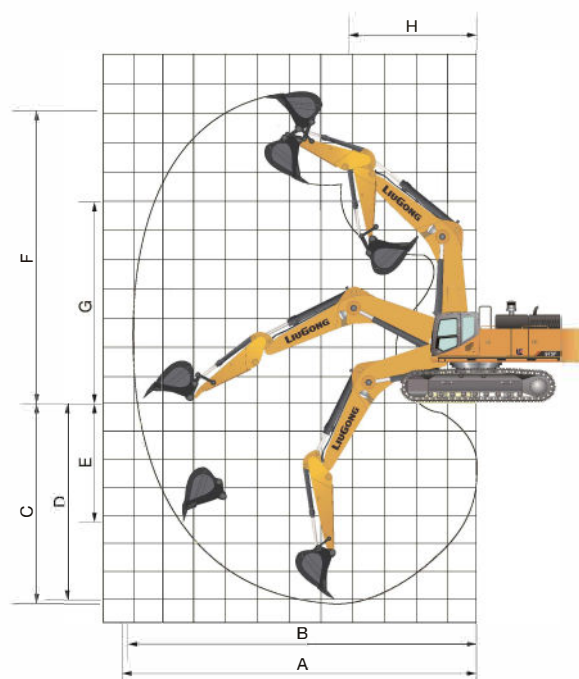
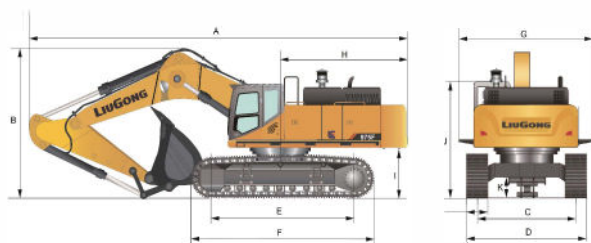
Emission Regulation	Tier 4F / Stage V
Manufacturer	Cummins
Model	X15
Rated Power	391 kW (524 hp / 532 ps) @ 1,800 rpm
Net Power	375 kW (503 hp / 510 ps) @ 1,800 rpm
Peak Torque	2,373 N·m @ 1,400 rpm
Number of Cylinders	6
Displacement	15 L

UNDERCARRIAGE

Shoe Width	650 mm
Number of Shoes per Side	48
Number of Upper Rollers per Side	3
Number of Bottom Rollers per Side	8

DIMENSIONS

A Shipping Length	13,090 mm
B Shipping Height	4,260 mm
C Track Gauge	3,350 mm
D Undercarriage Width	4,240 / 4,000 mm
E Length to Center of Rollers	4,750 mm
F Track Length	5,990 mm
G Overall Width of Upper Structure	4,260 / 3,390 mm
H Tail Swing Radius	4,490 mm
I Counterweight Ground Clearance	1,495 mm
J Overall Height of Cab	3,490 mm
K Min. Ground Clearance	867 mm



WORKING RANGE

Boom Length	7,060 mm (6,600mm Optional)
Arm Length	2,900 mm
A Max. Digging Reach	11,800 mm
B Max. Digging Reach on Ground	11,500 mm
C Max. Digging Depth	7,625 mm
D Max. Digging Depth, 2.44 m (8') Level	7,450 mm
E Max. Vertical Wall Digging Depth	4,200 mm
F Max. Cutting Height	11,240 mm
G Max. Dumping Height	7,315 mm
H Min. Front Swing Radius	4,490 mm

HYDRAULIC SYSTEM

Main Pumps Total Flow	2x504 L/min
Relief Pressure, main	35 MPa
Relief Pressure, boost	37.3 MPa

SERVICE CAPACITIES

Fuel Tank	1,100 L
Engine Oil	46 L
Cooling System	72 L
Hydraulic Reservoir	320 L
Hydraulic System Total	680 L

Guangxi Liugong Machinery Co., Ltd.

No. 1 Liutai Road, Liuzhou, Guangxi 545007, PR China
T: +86 772 3886124 E: overseas@liugong.com
www.liugong.com

Specifications and designs are subject to change without notice. Machines shown may include optional equipment. Liugong standard and optional equipment may vary from region to region. Please consult your Liugong dealer for information specific to your area. Engine power kW is converted to horsepower (1 kW=1.3596 ps and 1 kW=1.3410 hp) in this file.

06/2023 Designed by Liugong