



925FCR EXCAVATOR

ALL NEW
F-SERIES

Engine	B6.7
Net Power	116kW
Operating Weight	25,500-28,200kg
Bucket Capacity	0.9-1.2m ³



TOUGH WORLD. TOUGH EQUIPMENT.

SPECIFICATIONS



OPERATING WEIGHT
25,500-28,200 kg (56,218-62,170 lbs)
Operating weight includes coolant, lubricants, full fuel tank, cab, standard shoes, boom, arm, bucket and operator 75 kg (165 lbs).
Bucket Capacity 0.9-1.2 m³ (1.18-1.57 yd³)

ENGINE
Description
Cummins EPA Tier 4 final / EU Stage V, 6-cylinder straight Variable-Geometry Turbocharger (VGT), high pressure common rail, electronically controlled direct injection. Air cleaner: Cummins direct flow air filter. Cooling system: Air-to-air intercooler
Emission rating EPA Tier 4 final / EU Stage V
Engine manufacturer Cummins
Engine model B6.7
Aspiration Variable-Geometry Turbocharger (VGT)
Charged air cooling Aftercooler
Cooling fan drive Electric motor
Displacement 6.7 L (1.8 gal)
Engine output - net (SAE J1349 / ISO 9249) 116 kW (156 hp) @ 2,200 rpm
Engine output - rated (SAE J1995 / ISO 14396) 116 kW (156 hp) @ 2,200 rpm
Maximum torque 746 N·m @ 1,300 rpm (550 lbf·ft @ 1,300 rpm)
Bore × Stroke 107 × 124 mm (4.2" × 4.9")

DRIVE AND BRAKES
Description
2-speed axial piston motors with oil disk brakes. Steering controlled by two hand levers with pedals.
Max. travel speed High: 5.4 km/h (3.4 mph) Low: 3.1 km/h (1.9 mph)
Gradeability 35°/70%
Max. drawbar pull 220 kN (49,458 lbf)

HYDRAULIC SYSTEM
Main pump
Type Two variable displacement piston pumps
Maximum flow 2 × 228 L/min (2 × 60.2 gal/min)
Pilot pump
Type Gear pump
Maximum flow 17.5 L/min (4.6 gal/min)
Relief valve setting
Implement 34.3 / 37.3 MPa (4,975 / 5,410 psi)
Travel circuit 34.3 MPa (4,975 psi)
Slew circuit 31 MPa (4,496 psi)
Pilot circuit 3.9 MPa (566 psi)
Hydraulic cylinders
Boom Cylinder – Bore × Stroke Φ125 × 1,353 mm (Φ4.9" × 4'5")
Stick Cylinder – Bore×Stroke Φ135 × 1,490 mm (Φ5.3" × 4'11")
Bucket Cylinder – Bore × Stroke Φ115 × 1,120 mm (Φ4.5" × 3'8")

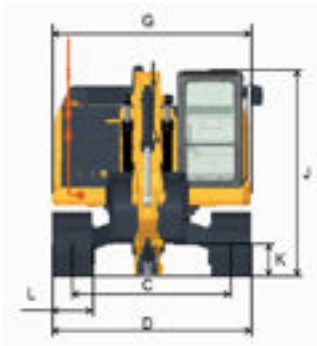
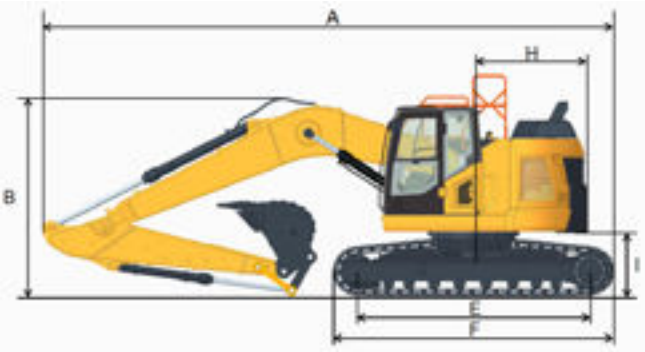
SWING SYSTEM
Description
Planetary gear reduction driven by high torque axial piston motor, with oil disk brake. Swing parking brake resets within five seconds after swing pilot controls return to neutral.
Swing speed 10.5 rpm
Swing torque 78,000 N·m (57,530 lbf·ft)

ELECTRIC SYSTEM
System Voltage 24 V
Batteries 2 x 12 V
Alternator 24 V-180 A
Start motor 24 V -7.8 kW

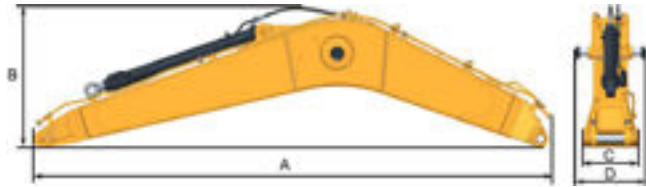
UNDERCARRIAGE
Track shoe each side 49
Link pitch 190 mm (7.5")
Shoe width, triple grouser 600 mm (24")
Bottom rollers each side 8
Top rollers each side 2

SERVICE CAPACITIES
Fuel tank 320 L (84.5 gal)
Engine oil 25 L (6.6 gal)
Final drive (each) 5.5 L (1.5 gal)
Swing drive 3.4 L (0.9 gal)
Cooling system 25 L (6.6 gal)
Hydraulic reservoir 182 L (48.1 gal)
Hydraulic system total 320 L (84.5 gal)
DEF tank 44 L (11.6 gal)

SOUND PERFORMANCE
Interior sound power level (ISO 6396) 69 dB(A)
Exterior sound power level (ISO 6395) 100 dB(A)



DIMENSIONS	925FCR	
Boom	5,710 mm (18'9")	5,710 mm (18'9")
Arm Options	2,915 mm (9'7")	2,400 mm (7'10")
A Shipping Length	8,960 mm (29'5")	9,670 mm (31'9")
B Shipping Height – Top of Boom	3,060 mm (10'0")	3,150 mm (10'4")
C Track Gauge	2,390 mm (7'10")	
D Undercarriage Width – 600 mm (24") shoes	2,990 mm (9'10")	
700 mm (28") shoes	3,090 mm (10'2")	
800 mm (32") shoes	3,190 mm (10'6")	
900 mm (35") shoes	3,290 mm (10'10")	
E Length to Center of Rollers	3,650 mm (11'12")	
F Track Length	4,450 mm (14'7")	
G Overall Width of Upper Structure	2,990 mm (9'10")	
H Tail Swing Radius	1,780 mm (5'10")	
I Counterweight Ground Clearance	1,010 mm (3'4")	
J Overall Height of Cab	2,980 mm (9'9")	
J (i) Height of Cab Including Lighting Halo	3,060 mm (10'0")	
J (ii) Height of Cab Including FOPS Guard	3,120 mm (10'3")	
K Min. Ground Clearance	470 mm (1'7")	
L Track Shoe Width	600 mm (24")	

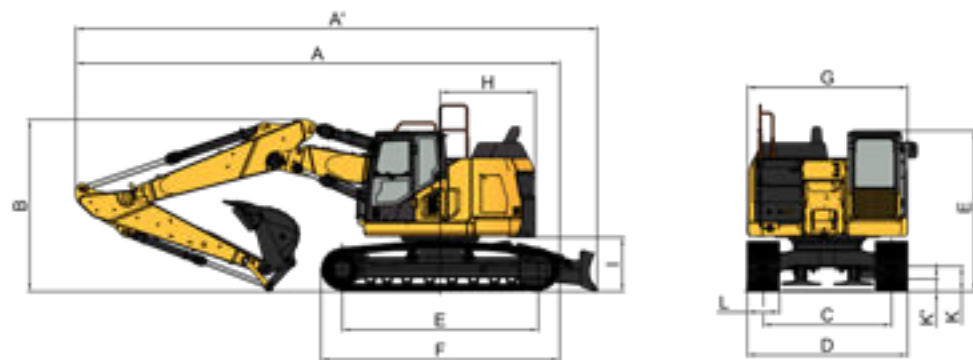


BOOM DIMENSIONS	925FCR
Boom	5,710 mm (18'9")
A Length	5,898 mm (19'4")
B Height	1,630 mm (5'4")
C Width	622 mm (2'0")
D Width	788 mm (2'7")
Weight	2,120 kg (4,673.8 lbs)

Includes arm cylinder, piping and pin.

ARM DIMENSIONS		
Arm	2,915 mm (9'7")	2,400 m (7'10")
A Length	3,918 mm (12'10")	3,375 mm (11'1")
B Height	826 mm (2'9")	820 mm (2'8")
C Width	476 mm (1'7")	476 mm (1'7")
Weight	1,115 kg (2,458.2 lbs)	1,030 kg (2270.8 lbs)

Includes bucket cylinder, linkage and pin.



DIMENSIONS	925FCR TPB
Boom	5,700 mm (18'8")
Arm Length	2,915 mm (9'7")
A Shipping Length	9,010 mm (29'7")
A' Shipping Length (with dozar)	9,720 mm (31'11")
B Shipping Height – Top of Boom	3,200 mm (10'6")
C Track Gauge	2,390 mm (7'10")
D Undercarriage Width – 600 mm (24") shoes	2,990 mm (9'10")
700 mm (28") shoes	3,090 mm (10'2")
800 mm (32") shoes	3,190 mm (10'6")
900 mm (35") shoes	3,290 mm (10'10")
E Length to Center of Rollers	3,650 mm (11'12")
F Track Length	4,450 mm (14'7")
G Overall Width of Upper Structure	2,990 mm (9'10")
H Tail Swing Radius	1,780 mm (5'10")
I Counterweight Ground Clearance	1,010 mm (3'4")
J Overall Height of Cab	2,980 mm (9'9")
J (i) Height of Cab Including Lighting Halo	3,060 mm (10'0")
J (ii) Height of Cab Including FOPS Guard	3,120 mm (10'3")
K Min. Ground Clearance	470 mm (1'7")
L Track Shoe Width	600 mm (24")

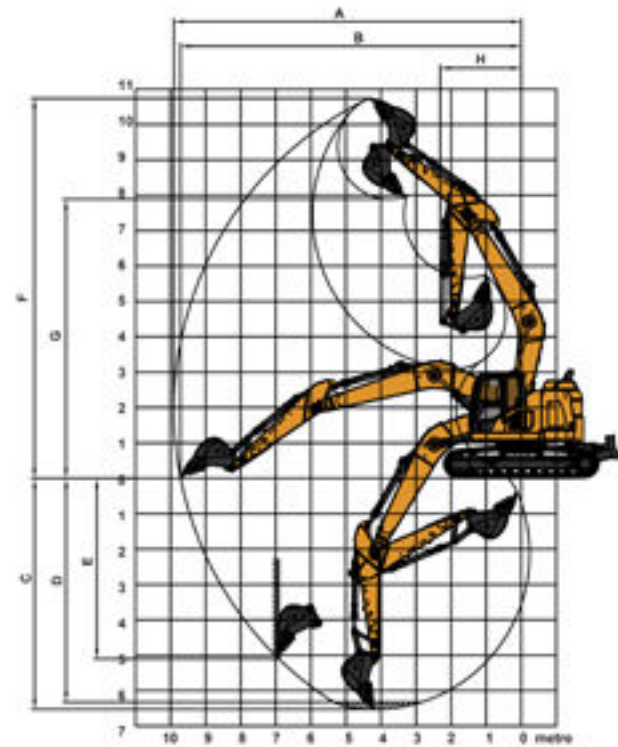


BOOM DIMENSIONS	925FCR TPB
Boom	5,700 mm (18'8")
A Length	5,885 mm (19'4")
B Height	1,440 mm (4'9")
C Width	622 mm (2'0")
D Width	788 mm (2'7")
Weight	2,860 kg (6305.2 lbs)

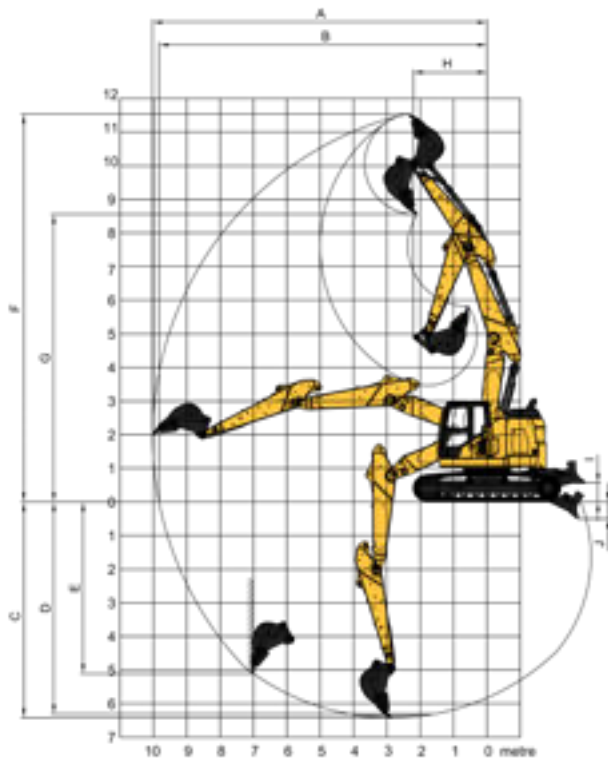
Includes arm cylinder, piping and pin.

ARM DIMENSIONS		
Arm	2,915 mm (9'7")	2,400 m (7'10")
A Length	3,918 mm (12'10")	3,375 mm (11'1")
B Height	826 mm (2'9")	820 mm (2'8")
C Width	476 mm (1'7")	476 mm (1'7")
Weight	1,115 kg (2,458.2 lbs)	1,030 kg (2270.8 lbs)

Includes bucket cylinder, linkage and pin.



WORKING RANGE		925FCR
Boom Length		5,710 mm (18'9")
Arm Length		2,915 mm (9'7")
A. Max. Digging Reach		9,906 mm (32'6")
B. Max. Digging Reach on Ground		9,720 mm (31'11")
C. Max. Digging Depth		6,530 mm (21'5")
D. Max. Digging Depth, 2.44 m (8') Level		6,330 mm (20'9")
E. Max. Vertical Wall Digging Depth		5,100 mm (16'9")
F. Max. Cutting Height		10,740 mm (35'3")
G. Max. Dumping Height		7,890 mm (25'11")
H. Min. Front Swing Radius		2,310 mm (7'7")
Bucket Digging Force (ISO)	Normal	140 kN (31,473 lbf)
	Power Boost	153 kN (34,283 lbf)
Stick Digging Force (ISO)	Normal	97 kN (21,694 lbf)
	Power Boost	105 kN (23,605 lbf)
Bucket Capacity		1.0 m³ (1.31 yd³)
Bucket Tip Radius		1,478 mm (4'10")



WORKING RANGE		925FCR TPB
Boom Length		5,700 mm (18'8")
Arm Length		2,915 mm (9'7")
A. Max. Digging Reach		10,020 mm (32'10")
B. Max. Digging Reach on Ground		9,830 mm (32'3")
C. Max. Digging Depth		6,420 mm (21'1")
D. Max. Digging Depth, 2.44 m (8') Level		6,310 mm (20'8")
E. Max. Vertical Wall Digging Depth		5,100 mm (16'9")
F. Max. Cutting Height		11,540 mm (37'10")
G. Max. Dumping Height		8,560 mm (28'1")
H. Min. Front Swing Radius		2,210 mm (7'3")
Bucket Digging Force (ISO)	Normal	140 kN (31,473 lbf)
	Power Boost	152.5 kN (34,283 lbf)
Stick Digging Force (ISO)	Normal	97 kN (21,694 lbf)
	Power Boost	105 kN (23,605 lbf)
Bucket Capacity		1.0 m³ (1.31 yd³)
Bucket Tip Radius		1,478 mm (4'10")

MACHINE WEIGHTS AND GROUND PRESSURE						
Shoe width	925FCR			925FCR TPB		
	Operating weight	Ground pressure	Overall width	Operating weight	Ground pressure	Overall width
	5,710 mm (18'9") boom, 2,915 mm (9'7") arm, 1.0 m³ (1.31 yd³) bucket, 6,400 kg (14,110 lbs) counterweight			5,700 mm (18'8") boom, 2,915 mm (9'7") arm, 1.0 m³ (1.31 yd³), with dozar, 6,400 kg (14,110 lbs) counterweight		
600 mm (24")	25,800 kg (56,879 lbs)	53.7 kPa (7.8 psi)	2,990 mm (9'10")	28,400 kg (62,611 lbs)	59.1 kPa (8.6 psi)	2,990 mm (9'10")
700 mm (28")	26,200 kg (57,761 lbs)	46.7 kPa (6.8 psi)	3,090 mm (10'2")	28,800 kg (63,493 lbs)	51.4 kPa (7.5 psi)	3,090 mm (10'2")
800 mm (32")	26,500 kg (58,422 lbs)	41.4 kPa (6 psi)	3,190 mm (10'6")	29,100 kg (64,155 lbs)	45.4 kPa (6.6 psi)	3,190 mm (10'6")
900 mm (35")	26,650 kg (58,753 lbs)	37 kPa (5.4 psi)	3,290 mm (10'10")	29,250 kg (64,485 lbs)	40.6 kPa (5.9 psi)	3,290 mm (10'10")

BUCKET SELECTION GUIDE						
Bucket type	Capacity	Cutting width	Weight	Teeth pcs	5.71 m (18'9") or 5.7 m (18'8") Boom	
					2.4 m (7'10") Arm	2.915 m (9'7") Arm
Earth type	0.9 m³ (1.2 yd³)	1,200 mm (3'11")	734 kg (1,618 lbs)	5	B	B
Earth type	1.0 m³ (1.3 yd³)	1,260 mm (4'2")	779 kg (1,717 lbs)	5	B	B
Earth type	1.1 m³ (1.4 yd³)	1,330 mm (4'4")	806 kg (1,777 lbs)	5	B	B
Earth type	1.2 m³ (1.6 yd³)	1,390 mm (4'7")	831 kg (1,832 lbs)	5	B	B
General type	1.0 m³ (1.3 yd³)	1,260 mm (4'2")	859 kg (1,894 lbs)	5	C	C
General type	1.1 m³ (1.4 yd³)	1,330 mm (4'4")	896 kg (1,975 lbs)	5	C	C
Rock type	1.0 m³ (1.3 yd³)	1,300 mm (4'3")	1,046 kg (2,306 lbs)	5	D	D
Rock type	1.1 m³ (1.4 yd³)	1,370 mm (4'6")	1,095 kg (2,414 lbs)	5	D	D

The recommendations are given as a guide only, based on typical operation conditions.
Bucket capacity based on ISO 7451, heaped material with a 1:1 angle of repose.

Maximum material density:
A. 1,200-1,300 kg/m³ (2,023-2,191 lb/yd³): Coal, Caliche, Shale
B. 1,400-1,600 kg/m³ (2,360-2,697 lb/yd³): Wet earth and clay, limestone, sandstone
C. 1,700-1,800 kg/m³ (2,865-3,034 lb/yd³): Granite, wet sand, well blasted rock
D. 1,900 kg/m³ (3,203 lb/yd³): Wet mud, Iron ore
NA. Not applicable



Lifting capacity at the arm end without bucket.
For lifting capacity including bucket, weight of the bucket or the bucket with quick coupler must be deducted from the lifting capacities.

Lifting capacities are based on the machine standing on a firm, uniform supporting surface.



Rating over-front (Cf)



Rating over-side (Cs)

1. Do not attempt to lift or hold any load that is greater than these rated values at their specified load radius and height. Weight of all accessories must be deducted from the above lifting capacities.
2. The rated loads are in compliance with ISO 10567 Hydraulic Excavator Lift Capacity Rating Standard. They do not exceed 87% of hydraulic lifting capacity or 75% tipping load.
3. Ratings at bucket lift hook.

4. Lifting capacities are based on machine standing on level, firm and uniform ground.
5. *Indicates the load is limited by hydraulic capacity rather than tipping capacity.
6. Operator should be fully acquainted with the Operator's and Maintenance Instructions before operating this machine and rules for the safe operation of equipment should be adhered to at all times.

LIFTING CAPACITY

925FCR with 700 mm Shoes, 5,710 mm Boom, 2,915 mm Arm, with dozer

A: Load radius
B: Load point height
C: Lifting capacity rating
Cf: Rating loads over front
Cs: Rating loads over side

Conditions:
Boom length: 5,710 mm
Arm length: 2,915 mm
Bucket: None
counterweight: 6,400 kg
Shoes: 700 mm triple grouser
Unit: kg



A (Unit: m)

B (m)	3		4.5		6		7.5		8		MAX REACH		A (m)	
	Cf	Cs	Cf	Cs	Cf	Cs	Cf	Cs	Cf	Cs	Cf	Cs		
7.5	kg			*4,389	*4,389	*4,615	*4,615					*4,008	*4,008	6.2
6.0	kg			*4,837	*4,837	*4,847	*4,847					*3,792	*3,792	7.3
4.5	kg	*7,945	*7,945	*6,179	*6,179	*5,443	5,255	*5,149	3,735			*3,607	3,361	8
3.0	kg			*8,125	7,476	*6,351	4,987	*5,557	3,621	*5,414	3,288	*4,000	3,106	8.3
1.5	kg			*9,914	6,943	*7,281	4,729	5,982	3,496	5,451	3,196	*4,029	2,983	8.4
GROUND LEVEL	kg	*6,240	*6,240	*10,904	6,672	*7,956	4,554	5,883	3,406	5,381	3,133	*4,388	3,035	8.2
-1.5	kg	*10,467	*10,467	*11,082	6,613	8,021	4,490	5,863	3,388			5,761	3,335	7.6
-3.0	kg	*14,991	12,654	*10,491	6,705	*7,804	4,547					*6,649	3,903	6.8

LIFTING CAPACITY

925FCR with 28" Shoes, 18'9" Boom, 9'7" Arm, with dozer

A: Load radius
B: Load point height
C: Lifting capacity rating
Cf: Rating loads over front
Cs: Rating loads over side

Conditions
Boom length: 18'9"
Arm length: 9'7"
Bucket: None
counterweight: 14,110 lbs
Shoes: 28" triple grouser
Unit: lbs



A (Unit: ft)

B (ft)	10		15		20		25		26		MAX REACH			
	Cf	Cs	Cf	Cs	Cf	Cs	Cf	Cs	Cf	Cs	Cf	Cs	A (ft)	
25	lbs			*9,676	*9,676	*10,174	*10,174					*8,837	*8,837	20
20	lbs			*10,665	*10,665	*10,686	*10,686					*8,359	*8,359	24
15	lbs	*17,516	*17,516	*13,622	*13,622	*11,999	11,586	*11,351	8,235			*7,953	7,409	26
10	lbs			*17,913	16,482	*14,001	10,995	*12,250	7,982	*11,936	7,249	*8,819	6,848	27
5	lbs			*21,857	15,306	*16,052	10,425	13,189	7,707	12,017	7,046	*8,881	6,577	28
GROUND LEVEL	lbs	*13,756	*13,756	*24,040	14,709	*17,540	10,041	12,970	7,510	11,863	6,906	*9,673	6,691	27
-5	lbs	*23,077	*23,077	*24,433	14,580	17,683	9,900	12,926	7,470			12,702	7,353	25
-10	lbs	*33,048	27,897	*23,128	14,782	*17,204	10,024					*14,660	8,604	22

LIFTING CAPACITY

925FCR with 700 mm Shoes, 5,710 mm Boom, 2,915 mm Arm, with dozer

A: Load radius
B: Load point height
C: Lifting capacity rating
Cf: Rating loads over front
Cs: Rating loads over side

Conditions
Boom length: 5,710 mm
Arm length: 2,915 mm
Bucket: None
counterweight: 6,400 kg
Shoes: 700 mm triple grouser
Unit: kg



A (Blade Up)

B (m)		3		4.5		6		7.5		8		MAX REACH		
		Cf	Cs	Cf	Cs	Cf	Cs	Cf	Cs	Cf	Cs	Cf	Cs	A (m)
7.5	kg			*4,389	*4,389	*4,615	*4,615					*4,008	*4,008	6.2
6.0	kg			*4,837	*4,837	*4,847	*4,847					*3,792	3,711	7.3
4.5	kg	*7,945	*7,945	*6,179	*6,179	*5,443	4,946	*5,149	3,500			*3,607	3,143	8
3.0	kg			*8,125	7,027	*6,351	4,678	*5,557	3,385	*5,414	3,070	*4,000	2,898	8.3
1.5	kg			*9,914	6,494	*7,281	4,420	5,874	3,260	5,351	2,978	*4,029	2,777	8.4
GROUND LEVEL	kg	*6,240	*6,240	*10,904	6,223	7,947	4,246	5,774	3,171	5,281	2,915	*4,388	2,823	8.2
-1.5	kg	*10,467	*10,467	*11,082	6,164	7,873	4,182	5,755	3,153			5,655	3,104	7.6
-3.0	kg	*14,991	11,832	*10,491	6,256	*7,804	4,238					*6,649	3,638	6.8

LIFTING CAPACITY

925FCR with 28" Shoes, 18'9" Boom, 9'7" Arm, with dozer

A: Load radius
B: Load point height
C: Lifting capacity rating
Cf: Rating loads over front
Cs: Rating loads over side

Conditions
Boom length: 18'9"
Arm length: 9'7"
Bucket: None
counterweight: 14,110 lbs
Shoes: 28" triple grouser
Unit: lbs



A (Blade Up)

B (ft)	10		15		20		25		26		MAX REACH			
	Cf	Cs	Cf	Cs	Cf	Cs	Cf	Cs	Cf	Cs	Cf	Cs	A (ft)	
25	lbs			*9,676	*9,676	*10,174	*10,174					*8,837	*8,837	20
20	lbs			*10,665	*10,665	*10,686	*10,686					*8,359	8,181	24
15	lbs	*17,516	*17,516	*13,622	*13,622	*11,999	10,905	*11,351	7,716			*7,953	6,929	26
10	lbs			*17,913	15,492	*14,001	10,314	*12,250	7,463	*11,936	6,768	*8,819	6,388	27
5	lbs			*21,857	14,316	*16,052	9,744	12,950	7,188	11,797	6,565	*8,881	6,123	28
GROUND LEVEL	lbs	*13,756	*13,756	*24,040	13,719	17,520	9,360	12,731	6,991	11,643	6,425	*9,673	6,224	27
-5	lbs	*23,077	*23,077	*24,433	13,590	17,357	9,219	12,687	6,951			12,467	6,842	25
-10	lbs	*33,048	26,085	*23,128	13,792	*17,204	9,344					*14,660	8,021	22



LIFTING CAPACITY

925FCR with 700 mm Shoes, 5,710 mm Boom, 2,915 mm Arm, with dozer

A: Load radius
B: Load point height
C: Lifting capacity rating
Cf: Rating loads over front
Cs: Rating loads over side

Conditions

Boom length: 5,710 mm
Arm length: 2,915 mm
Bucket: None
counterweight: 6,400 kg
Shoes: 700 mm triple grouser
Unit: kg



A (Blade Down)														
B (m)	3		4.5		6		7.5		8		MAX REACH			
	Cf	Cs	Cf	Cs	Cf	Cs	Cf	Cs	Cf	Cs	Cf	Cs	A (m)	
7.5	kg			*4,389	*4,389	*4,615	*4,615					*4,008	*4,008	6.2
6.0	kg			*4,837	*4,837	*4,847	*4,847					*3,792	3,711	7.3
4.5	kg	*7,945	*7,945	*6,179	*6,179	*5,443	4,946	*5,149	3,500			*3,607	3,143	8
3.0	kg			*8,125	7,027	*6,351	4,678	*5,557	3,385	*5,414	3,070	*4,000	2,898	8.3
1.5	kg			*9,914	6,494	*7,281	4,420	*6,035	3,260	*5,773	2,978	*4,029	2,777	8.4
GROUND LEVEL	kg	*6,240	*6,240	*10,904	6,223	*7,956	4,246	*6,399	3,171	*6,033	2,915	*4,388	2,823	8.2
-1.5	kg	*10,467	*10,467	*11,082	6,164	*8,198	4,182	*6,439	3,153			*6,243	3,104	7.6
-3.0	kg	*14,991	11,832	*10,491	6,256	*7,804	4,238					*6,649	3,638	6.8

LIFTING CAPACITY

925FCR with 28" Shoes, 18'9" Boom, 9'7" Arm, with dozer

A: Load radius
B: Load point height
C: Lifting capacity rating
Cf: Rating loads over front
Cs: Rating loads over side

Conditions

Boom length: 18'9"
Arm length: 9'7"
Bucket: None
counterweight: 14,110 lbs
Shoes: 28" triple grouser
Unit: lbs



A (Blade Down)														
B (ft)	10		15		20		25		26		MAX REACH			
	Cf	Cs	Cf	Cs	Cf	Cs	Cf	Cs	Cf	Cs	Cf	Cs	A (ft)	
25	lbs			*9,676	*9,676	*10,174	*10,174					*8,837	*8,837	20
20	lbs			*10,665	*10,665	*10,686	*10,686					*8,359	8,181	24
15	lbs	*17,516	*17,516	*13,622	*13,622	*11,999	10,905	*11,351	7,716			*7,953	6,929	26
10	lbs			*17,913	15,492	*14,001	10,314	*12,250	7,463	*11,936	6,768	*8,819	6,388	27
5	lbs			*21,857	14,316	*16,052	9,744	*13,304	7,188	*12,727	6,565	*8,881	6,123	28
GROUND LEVEL	lbs	*13,756	*13,756	*24,040	13,719	*17,540	9,360	*14,107	6,991	*13,300	6,425	*9,673	6,224	27
-5	lbs	*23,077	*23,077	*24,433	13,590	*18,073	9,219	*14,195	6,951			*13,763	6,842	25
-10	lbs	*33,048	26,085	*23,128	13,792	*17,204	9,344					*14,660	8,021	22

LIFTING CAPACITY

925FCR TPB with 600 mm Shoes, 5,700 mm Boom, 2,915 mm Arm

A: Load radius
B: Load point height
C: Lifting capacity rating
Cf: Rating loads over front
Cs: Rating loads over side

Conditions

Boom length: 5,700 mm
Arm length: 2,915 mm
Bucket: None
counterweight: 6,400 kg
Shoes: 600 mm triple grouser
Unit: kg



A (Unit: m)														
B (m)	3		4.5		6		7.5		8		MAX REACH			
	Cf	Cs	Cf	Cs	Cf	Cs	Cf	Cs	Cf	Cs	Cf	Cs	A (m)	
9.0	kg											*4,564	*4,564	3.9
7.5	kg			*5,788	*5,788							*3,850	*3,850	5.9
6.0	kg			*6,116	*6,116	*5,717	5,342					*3,845	*3,845	7
4.5	kg	*9,566	*9,566	*7,265	*7,265	*6,193	5,145	*4,687	3,599			*3,850	3,439	7.7
3.0	kg	*12,180	*12,180	*8,912	7,327	*6,929	4,846	*5,929	3,476	*4,353	3,138	*3,781	3,075	8.1
1.5	kg			*10,319	6,698	*7,631	4,546	5,803	3,333	*5,212	3,035	*4,557	2,980	8.1
GROUND LEVEL	kg	*7,761	*7,761	*10,888	6,350	7,841	4,333	5,683	3,225			*5,076	3,010	7.9
-1.5	kg	*11,931	11,700	*10,585	6,250	7,739	4,244					5,757	3,252	7.4
-3.0	kg	*12,855	11,955	*9,384	6,331	*6,949	4,297					*6,345	3,968	6.4

LIFTING CAPACITY

925FCR TPB with 24" Shoes, 18'8" Boom, 9'7" Arm

A: Load radius
B: Load point height
C: Lifting capacity rating
Cf: Rating loads over front
Cs: Rating loads over side

Conditions

Boom length: 18'8"
Arm length: 9'7"
Bucket: None
counterweight: 14,110 lbs
Shoes: 24" triple grouser
Unit: lbs



A (Unit: m)														
B (m)	3		4.5		6		7.5		8		MAX REACH			
	Cf	Cs	Cf	Cs	Cf	Cs	Cf	Cs	Cf	Cs	Cf	Cs	A (m)	
30	lbs											*10,062	*10,062	13
25	lbs			*12,760	*12,760							*8,489	*8,489	19
20	lbs			*13,484	*13,484	*12,603	11,777					*8,477	*8,477	23
15	lbs	*21,090	*21,090	*16,016	*16,016	*13,654	11,343	*10,333	7,935			*8,487	7,583	25
10	lbs	*26,852	*26,852	*19,647	16,152	*15,276	10,683	*13,070	7,663	*9,596	6,919	*8,336	6,779	27
5	lbs			*22,751	14,767	*16,823	10,022	12,793	7,348	*11,491	6,691	*10,047	6,569	27
GROUND LEVEL	lbs	*17,109	*17,109	*24,004	14,000	17,287	9,553	12,530	7,111			*11,191	6,635	26
-5	lbs	*26,303	25,794	*23,336	13,778	17,061	9,356					12,692	7,169	24
-10	lbs	*28,341	26,355	*20,688	13,958	*15,319	9,473					*13,989	8,747	21



LIFTING CAPACITY

925FCR TPB with 600 mm Shoes, 5,700 mm Boom, 2,915 mm Arm, with dozer

A: Load radius

B: Load point height

C: Lifting capacity rating

Cf: Rating loads over front

Cs: Rating loads over side

Conditions:

Boom length: 5,700 mm


Arm length: 2,915 mm

Bucket: None

counterweight: 6,400 kg

Shoes: 600 mm triple grouser

Unit: kg



A (Blade Up)

B (m)	3		4.5		6		7.5		8		MAX REACH			
	Cf	Cs	Cf	Cs	Cf	Cs	Cf	Cs	Cf	Cs	Cf	Cs	A (m)	
9.0	kg										*4,564	*4,564	3.9	
7.5	kg		*5,788	*5,788							*3,850	*3,850	5.9	
6.0	kg		*6,116	*6,116	*5,717	5,132					*3,845	*3,845	7	
4.5	kg	*9,566	*9,566	*7,265	*7,265	*6,193	4,936	*4,687	3,440		*3,850	3,285	7.7	
3.0	kg	*12,180	*12,180	*8,912	7,022	*6,929	4,636	*5,929	3,316	*4,353	2,991	*3,781	2,929	8.1
1.5	kg			*10,319	6,394	*7,631	4,336	5,792	3,173	*5,212	2,887	*4,557	2,834	8.1
GROUND LEVEL	kg	*7,761	*7,761	*10,888	6,046	7,827	4,124	5,673	3,066			*5,076	2,860	7.9
-1.5	kg	*11,931	11,143	*10,585	5,945	7,724	4,035					5,746	3,090	7.4
-3.0	kg	*12,855	11,398	*9,384	6,027	*6,949	4,088					*6,345	3,774	6.4

LIFTING CAPACITY

925FCR TPB with 24" Shoes, 18'8" Boom, 9'7" Arm, with dozer

A: Load radius

B: Load point height

C: Lifting capacity rating

Cf: Rating loads over front

Cs: Rating loads over side

Conditions

Boom length: 18'8"


Arm length: 9'7"

Bucket: None

counterweight: 14,110 lbs

Shoes: 24" triple grouser

Unit: lbs



A (Blade Up)

B (ft)	10		15		20		25		26		MAX REACH			
	Cf	Cs	Cf	Cs	Cf	Cs	Cf	Cs	Cf	Cs	Cf	Cs	A (ft)	
30	lbs										*10,062	*10,062	13	
25	lbs		*12,760	*12,760							*8,489	*8,489	19	
20	lbs		*13,484	*13,484	*12,603	11,315					*8,477	*8,477	23	
15	lbs	*21,090	*21,090	*16,016	*16,016	*13,654	10,882	*10,333	7,583		*8,487	7,242	25	
10	lbs	*26,852	*26,852	*19,647	15,482	*15,276	10,221	*13,070	7,311	*9,596	6,593	*8,336	6,458	27
5	lbs			*22,751	14,096	*16,823	9,560	12,770	6,996	*11,491	6,365	*10,047	6,248	27
GROUND LEVEL	lbs	*17,109	*17,109	*24,004	13,329	17,255	9,091	12,506	6,759			*11,191	6,304	26
-5	lbs	*26,303	24,566	*23,336	13,107	17,029	8,895					12,669	6,812	24
-10	lbs	*28,341	25,127	*20,688	13,287	*15,319	9,012					*13,989	8,321	21

LIFTING CAPACITY

925FCR TPB with 600 mm Shoes, 5,700 mm Boom, 2,915 mm Arm, with dozer

A: Load radius

B: Load point height

C: Lifting capacity rating

Cf: Rating loads over front

Cs: Rating loads over side

Conditions:

Boom length: 5,700 mm


Arm length: 2,915 mm

Bucket: None

counterweight: 6,400 kg

Shoes: 600 mm triple grouser

Unit: kg



A (Blade Down)														
B (m)	3		4.5		6		7.5		8		MAX REACH			
	Cf	Cs	Cf	Cs	Cf	Cs	Cf	Cs	Cf	Cs	Cf	Cs	A (m)	
9.0	kg											*4,564	*4,564	3.9
7.5	kg			*5,788	*5,788							*3,850	*3,850	5.9
6.0	kg			*6,116	*6,116	*5,717	5,132					*3,845	*3,845	7
4.5	kg	*9,566	*9,566	*7,265	*7,265	*6,193	4,936	*4,687	3,440			*3,850	3,285	7.7
3.0	kg	*12,180	*12,180	*8,912	7,022	*6,929	4,636	*5,929	3,316	*4,353	2,991	*3,781	2,929	8.1
1.5	kg			*10,319	6,394	*7,631	4,336	*6,234	3,173	*5,212	2,887	*4,557	2,834	8.1
GROUND LEVEL	kg	*7,761	*7,761	*10,888	6,046	*8,018	4,124	*6,356	3,066			*5,076	2,860	7.9
-1.5	kg	*11,931	11,143	*10,585	5,945	*7,889	4,035					*5,944	3,090	7.4
-3.0	kg	*12,855	11,398	*9,384	6,027	*6,949	4,088					*6,345	3,774	6.4

LIFTING CAPACITY

925FCR TPB with 24" Shoes, 18'8" Boom, 9'7" Arm, with dozer

Conditions:

Boom length: 18'8"


Arm length: 9'7"

Bucket: None

counterweight: 14,110 lbs

Shoes: 24" triple grouser

Unit: lbs



A (Blade Down)

B (m)		3		4.5		6		7.5		8		MAX REACH		A (m)
		Cf	Cs	Cf	Cs	Cf	Cs	Cf	Cs	Cf	Cs	Cf	Cs	
30	lbs											*10,062	*10,062	13
25	lbs			*12,760	*12,760							*8,489	*8,489	19
20	lbs			*13,484	*13,484	*12,603	11,315					*8,477	*8,477	23
15	lbs	*21,090	*21,090	*16,016	*16,016	*13,654	10,882	*10,333	7,583			*8,487	7,242	25
10	lbs	*26,852	*26,852	*19,647	15,482	*15,276	10,221	*13,070	7,311	*9,596	6,593	*8,336	6,458	27
5	lbs			*22,751	14,096	*16,823	9,560	*13,744	6,996	*11,491	6,365	*10,047	6,248	27
GROUND LEVEL	lbs	*17,109	*17,109	*24,004	13,329	*17,677	9,091	*14,012	6,759			*11,191	6,304	26
-5	lbs	*26,303	24,566	*23,336	13,107	*17,392	8,895					*13,104	6,812	24
-10	lbs	*28,341	25,127	*20,688	13,287	*15,319	9,012					*13,989	8,321	21

STANDARD EQUIPMENT

ENGINE SYSTEM

Cummins B6.7 engine, EPA Tier 4F/EU Stage V, turbocharged, 6 cylinder, 4 stroke, water cooled.	<input type="checkbox"/>
Engine overheat prevention system	<input type="checkbox"/>
Auto-idle speed control	<input type="checkbox"/>
Automatic engine shutdown	<input type="checkbox"/>
Air filter with integrated pre-cleaner	<input type="checkbox"/>
Metal fuel tank	<input type="checkbox"/>
Fuel pre-filter with water separator and water detection	<input type="checkbox"/>
Electric fuel lifting pump	<input type="checkbox"/>
Remote engine oil filter	<input type="checkbox"/>
Double engine oil dip-stick	<input type="checkbox"/>
6 x reversible electric cooling fans	<input type="checkbox"/>
Dismountable radiator dustproof net	<input type="checkbox"/>
Air conditioner compressor belt automatic tensioner	<input type="checkbox"/>
Cold starting kit for -20° C	<input type="checkbox"/>
Electric refueling pump with auto shutoff	<input type="checkbox"/>

HYDRAULIC SYSTEM

Full electric control hydraulic system	<input type="checkbox"/>
3-power modes (Power, Standard, Economy)	<input type="checkbox"/>
Power boost function (automatic & manual)	<input type="checkbox"/>
Pilot control shut-off lever	<input type="checkbox"/>
Pilot accumulator	<input type="checkbox"/>
Automatic swing parking brake	<input type="checkbox"/>
Swing with anti-reverse function	<input type="checkbox"/>
Boom and arm regeneration circuits	<input type="checkbox"/>
Boom and arm holding valves	<input type="checkbox"/>
Boom lowering device for back-up	<input type="checkbox"/>
Automatic two-speed travel	<input type="checkbox"/>
Automatic travel parking brake	<input type="checkbox"/>
Hydraulic oil temperature independent control	<input type="checkbox"/>
Pressure checking port for main pump	<input type="checkbox"/>
Proportional joystick control auxiliary rotation line	<input type="checkbox"/>
Proportional joystick control auxiliary two way line	<input type="checkbox"/>
Auxiliary one/two way lines exchange on the monitor	<input type="checkbox"/>
Auxiliary one/two way lines flow & pressure adjustable on the monitor	<input type="checkbox"/>
Control pattern-change on the monitor	<input type="checkbox"/>
Auxiliary rotation line flow adjustable on the monitor	<input type="checkbox"/>

OPERATOR STATION

Pressurized and sealed cab with all-around visibility	<input type="checkbox"/>
ROPS certified cab	<input type="checkbox"/>
Removeable lower windshield	<input type="checkbox"/>
Openable front windshield	<input type="checkbox"/>
Large roof window with slide sliding sun visor	<input type="checkbox"/>
Air suspension deluxe seat (with heater and head rest) + retractable seat belt (75 mm [3 in] width, red colour, with warning alarm)	<input type="checkbox"/>
Consoles and seat height adjustable follow-up	<input type="checkbox"/>
8 inches high resolution LCD touch screen + integrated control panel	<input type="checkbox"/>
Automatic air conditioner, heater, defroster	<input type="checkbox"/>
Washable floor mat	<input type="checkbox"/>
Fire extinguisher	<input type="checkbox"/>
Safety hammer for cab evacuation	<input type="checkbox"/>
Storage box	<input type="checkbox"/>
Cup holder	<input type="checkbox"/>
Document holding space	<input type="checkbox"/>
Green safety glass	<input type="checkbox"/>
Sliding window positioning	<input type="checkbox"/>
Cab interior lighting	<input type="checkbox"/>
Tilt-up left side console	<input type="checkbox"/>

ELECTRICAL SYSTEM

Monitor: working mode, working hour, water temperature, oil temperature, fuel level, DEF level, fuel consumption, rear vision, fault code, work condition etc. machine information	<input type="checkbox"/>
Warn: low engine oil pressure, low fuel level, air filter clog, machine overheat, maintenance remind etc.	<input type="checkbox"/>
Front window wiper with intermittent feature	<input type="checkbox"/>
Wiper intermittent time adjustable	<input type="checkbox"/>
Bluetooth / AM/FM radio with auxiliary input	<input type="checkbox"/>
Start-up password	<input type="checkbox"/>
Work lights shut off delay timer	<input type="checkbox"/>
Cab light shut off delay timer	<input type="checkbox"/>
2 stereo speakers	<input type="checkbox"/>
2 signaling/warning horn	<input type="checkbox"/>
Battery disconnect switch	<input type="checkbox"/>
Emergency stop on ground	<input type="checkbox"/>
One-click start	<input type="checkbox"/>
Machine rear lighting	<input type="checkbox"/>
Password for attachments flow and pressure adjustments	<input type="checkbox"/>
Attachments flow and pressure programmable memories	<input type="checkbox"/>
Overload warning device	<input type="checkbox"/>
Travel alarm	<input type="checkbox"/>
Rotating beacon	<input type="checkbox"/>
4 boom working lights	<input type="checkbox"/>
Work lights: separately installed LED in front and rear cab (4 front and 2 rear)	<input type="checkbox"/>
360° view	<input type="checkbox"/>
Quicker-coupler activate warning	<input type="checkbox"/>

UNDERCARRIAGE

Standard track undercover	<input type="checkbox"/>
600 mm (24") track-shoes with triple grousers	<input type="checkbox"/>
Rollers, bottom - 8 each side	<input type="checkbox"/>
Rollers, top - 2 each side	<input type="checkbox"/>
3 piece track guards (each side)	<input type="checkbox"/>
Centralized lubrication for swing bearing	<input type="checkbox"/>
Towing eye on base frame	<input type="checkbox"/>
Traction hole	<input type="checkbox"/>

UPPER STRUCTURE

Frame side handrail	<input type="checkbox"/>
Anti-slip design plates	<input type="checkbox"/>
Lockable tool box	<input type="checkbox"/>
Main pump chamber separated by fire board	<input type="checkbox"/>
Standard frame undercover	<input type="checkbox"/>
Side door brace automatically lock	<input type="checkbox"/>
One key for all locks	<input type="checkbox"/>
Rearview mirror mounted in the RH machine	<input type="checkbox"/>
Rearview mirror mounted in the LH cab	<input type="checkbox"/>
6,400 kg (14,110 lbs) counterweight	<input type="checkbox"/>

DIGGING EQUIPMENT

1.0 m³ (1.3 yd³) GP Bucket	<input type="checkbox"/>
5,710 mm (18'9") boom	<input type="checkbox"/>
2,915 mm (9'7") arm	<input type="checkbox"/>
Arm front end with guard bars	<input type="checkbox"/>
Manual centralized lubrication on boom	<input type="checkbox"/>
Manual centralized lubrication on arm	<input type="checkbox"/>

SERVICE AND MAINTENANCE

Maintenance tool kit	<input type="checkbox"/>
Maintenance parts package	<input type="checkbox"/>
Telematics system	<input type="checkbox"/>
Remote program update	<input type="checkbox"/>
Data diagnostic port	<input type="checkbox"/>
Self-diagnostic system	<input type="checkbox"/>

OPTIONAL EQUIPMENT

ENGINE SYSTEM

Cold starting kit for -35° C	<input type="checkbox"/>
------------------------------	--------------------------

HYDRAULIC SYSTEM

Bucket cylinder rod protect	<input type="checkbox"/>
High pressure quick-coupler pipes	<input type="checkbox"/>
Low pressure quick-coupler pipes	<input type="checkbox"/>
Attachment oil drain line	<input type="checkbox"/>
Additional filter for breaker piping	<input type="checkbox"/>
Boom drift function	<input type="checkbox"/>
Straight travel with one pedal	<input type="checkbox"/>
Automatic hydraulic system warm-up	<input type="checkbox"/>
Long-life hydraulic oil (replacement cycle 5,000 h)	<input type="checkbox"/>

OPERATOR STATION

Cab lower window guard	<input type="checkbox"/>
Cab top guard	<input type="checkbox"/>
Openable cab front guard	<input type="checkbox"/>
Cab front guard and top guard (OPG)	<input type="checkbox"/>
Openable cab front window mesh guard	<input type="checkbox"/>
10 inches high resolution LCD touch screen + integrated control panel	<input type="checkbox"/>
Transparent cab skylight	<input type="checkbox"/>
Sunscreen	<input type="checkbox"/>
Front window rain visor	<input type="checkbox"/>

ELECTRICAL SYSTEM

Work lights: long strip LED light in front and rear cab	<input type="checkbox"/>
2 alarm mounted bracket on cab roof	<input type="checkbox"/>

UNDERCARRIAGE

700 mm (28"), 800 mm (32"), 900 mm (35") track-shoes with triple grousers	<input type="checkbox"/>
Additional track step	<input type="checkbox"/>
Full length track guard	<input type="checkbox"/>
Dozer with safety valve	<input type="checkbox"/>

UPPER STRUCTURE

Guard fence of upper frame around ☐

DIGGING EQUIPMENT

- Bucket linkage with lifting eye ☐
- 2,400 mm (7'10") short reach arm ☐
- Two piece boom (5,700 mm (18'8")) ☐
- 0.9 m³ (1.2 yd³) earth eype bucket ☐
- 1.1 m³ (1.4 yd³) GP Bucket ☐
- 1.2 m³ (1.6 yd³) light duty digging bucket ☐
- Hydraulic quick coupler ☐



LG-PB-925FCR-Stage V-WW-A4-052024-ENG



Guangxi LiuGong Machinery Co., Ltd.
No. 1 Liutai Road, Liuzhou, Guangxi 545007, PR China
T: +86 772 388 6124 E: overseas@liugong.com
www.liugong.com

Like and follow us:



The LiuGong series of logos herein, including but not limited to word marks, device marks, letter of alphabet marks and combination marks, as the registered trademarks of Guangxi LiuGong Group Co., Ltd. are used by Guangxi LiuGong Machinery Co., Ltd. with legal permission, and shall not be used without permission. Specifications and designs are subject to change without notice. Illustrations and pictures may include optional equipment and may not include all standard equipment. Equipment and options varies by regional availability.