



856T

WHEEL LOADER

Engine
Max Gross Power
Operating Weight
Standard Bucket

Cummins QSB6.7 (Stage V)
183 kW (245 hp) @ 1,700 rpm
19,600 kg (43,211 lbs)
3.5 m³ (4.6 yd³)



TOUGH WORLD. TOUGH EQUIPMENT.

“

WE DON'T SIMPLY MAKE WHEEL LOADERS – WE MAKE HISTORY...”

FIRST AND STILL THE BEST.

Way back in 1966, we designed and manufactured China's very first wheel loader, the famous Z435. Now, over 50 years' later, we are still making history for our global customers. Today, over **550,000** LiuGong wheel loaders are helping our customers build their own success stories and write their own histories.



YOUR PERFORMANCE DASHBOARD

You asked for tough, well-engineered wheel loader, with the ability to adapt to any situation and handle multiple jobs with ease. Our performance dashboard will help you discover the real, tough facts about our **New 856T**.



**TOUGHNESS &
DURABILITY**



**POWER &
EFFICIENCY**



**INTELLIGENT &
CONTROL**



**COMFORT &
ERGONOMICS**



**SAFETY &
VISIBILITY**



**UPTIME &
MAINTENANCE**

The New 856T matches your needs exactly.

No compromises, just everything you need. It's not rocket science, it's just customer focus matched with intelligent design.

CUSTOMER DRIVEN DESIGN...

Our customers don't like compromise, nor do we. That's why we do our homework before we start the design process to really understand how our machines are owned and operated.

This insight allows us to perfectly balance the demands of the machine owner and the machine operator without compromise.



reddot design award

RED DOT AWARD-WINNING DESIGN

Our UK design team have won a succession of Red Dot Awards for innovation and excellence in construction equipment design. Our new 856T shares this award-winning design DNA.

HERE'S THE BIG PICTURE...

856T WHEEL LOADER



SAFETY & VISIBILITY

- Pressurized cab with FOPS & ROPS
- Emergency steering
- Standard emergency stop button
- Anti-theft security system
- 120° front view
- Standard rear-view camera
- Optional 360° panoramic view system
- All-angle visible LCD dashboard
- Standard LED lighting
- Standard rear-view camera
- Optional 360° panoramic view system
- All-angle visible LCD dashboard



INTELLIGENT & CONTROL

- LiuGong Telematics
- Graphical touchscreen with multi-function settings
- Electronic quick-coupler system from the cab
- Auto payload system
- Auto dig function
- Auto boom height kick-out and bucket leveling from the cab



TOUGHNESS & DURABILITY

- Tough bucket with extended service life
- Upgraded boom structure
- Heavy-duty axle
- Highly durable frame



POWER & EFFICIENCY

- Powerful Cummins B6.7 Stage V engine
- Programmable auto engine idle stop
- 4/5 speed ZF powershift transmission
- Auto temperature-controlled, reversible fan
- Efficient, high pressure hydraulic system
- Optimized work devices*
- Standard ride control



COMFORT & ERGONOMICS

- Spacious cab with 12 air outlets auto A/C
- Four-way adjustable console & steering column
- Easy-to-use joystick pilot control*
- Accessible switch panel with LED backlight
- Ventilated, adjustable, heated air suspension seat
- Quiet cab: 69 dB(A) inside, 102 dB(A) outside
- One-touch engine start/stop button
- Electrically adjustable rear-view mirrors



UPTIME & MAINTENANCE

- Electric lift, tilt-back engine hood
- Gas-spring lift rear window*
- Auto-lube system
- Improved, centralized maintenance points
- Durable handrails and steps
- Ground-level servicing



NOW FOR THE DETAIL...

**“ IN TOUGH QUARRYING AND MINING ENVIRONMENTS
YOU’VE GOT TO TRUST YOUR MACHINE 100% ”**



TOUGHNESS & DURABILITY
DESIGNED TO WORK HARDER, FOR LONGER



DESIGNED TO WORK HARDER, FOR LONGER...



TOUGHNESS AND DURABILITY

To build machines that can withstand the toughest conditions takes intelligent design and high-quality production. We know that a machine is only as strong as its weakest point so every weld, every joint and every component is tested to the extreme and beyond. **Here's the proof.**



1. TOUGH QUALITY STANDARDS

When it comes to quality, we let our actions speak for themselves. We follow a rigorous Six Sigma methodology and consistently achieve ISO 9001 standards.



2. NEW Z-BAR LINKAGE

- Upgrade boom structure
- Boom breakout force is improved by 5%
- High-strength bucket with a longer service life
- Bucket breakout force is improved by 5%

TOUGHNESS IS WHAT WE DO...

With over **550,000** LiuGong Wheel Loaders already working in the world's toughest environments, you can trust our machines to keep working harder – for longer.



8



3. INCREASED TRACTION & STABILITY

For improved traction and stability, the 856T features LiuGong axles with limited-slip differentials, engineered to handle heavy loads effortlessly even in the toughest terrains.



4. TOUGHER CHASSIS FRAME

Designed to be tough, tested to extremes, our chassis can absorb the forces and pressures of the most demanding environments with ease.



5. EXTRA PAYLOAD PERFORMANCE

Our new T Series buckets save loading time, increase material retention and lower fuel consumption. Our test data showed

- Up to 16% improvement per hour in load performance.
- Up to 12% per hour reduction in fuel consumption.

PERFORMANCE STATISTICS

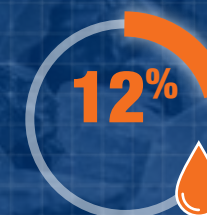
We don't just talk about toughness and durability, we deliver it. Our machines are held to our highest and most rigorous standards to give you a machine you can trust. Here's stats to prove it.



ISO 9001 QUALITY STANDARDS



16% IMPROVEMENT PER HOUR IN LOAD PERFORMANCE



12% PER HOUR REDUCTION IN FUEL CONSUMPTION



5% HIGHER BREAKOUT FORCE

9

“MORE POWER, LESS CONSUMPTION – WHY NOT HAVE BOTH?”



POWER & EFFICIENCY
BUILT TO MOVE MORE, FOR LESS



BUILT TO MOVE MORE, FOR LESS



POWER & EFFICIENCY

When you want the highest load and carry performance matched with the highest economy and efficiency – don't compromise, choose the New 856T. With the ultimate power shift transmission and smart fuel saving technology you can enjoy the power you want and the fuel economy you need.

- **CUMMINS B6.7**
- **6-CYLINDER, 6.7 LITRE, TURBOCHARGED, COMMON-RAIL**
- **NET POWER RATING OF 168 KW (182 HP) @ 2,000 RPM.**



1. MORE REAL POWER

The new 856T comes equipped with a fuel efficient, world-class Cummins B6.7 engine that maximizes torque output and delivers more power at lower engine speeds.



2. CLEAN AND COMPLIANT

Compact and optimized DOC+DEF+SCR with EGR free technology meets Stage V emissions regulations.

WHY COMPROMISE?

With advanced hydraulic system delivering 5% higher breakout force, the 856T gives you the power to move more material, for less cost, don't settle for anything less.



3. AUTO TEMPERATURE-CONTROLLED, REVERSIBLE FAN

The 856T boasts a temperature-controlled electric proportional hydraulic-drive fan. This smart fan automatically adjusts its speed according to ambient temperature and cooling needs, significantly reducing energy consumption.



4. SAVE EVERY DROP OF FUEL

Engine Auto Idle and Auto Shutdown make every single drop of fuel count. Reducing unproductive fuel waste saves money and helps protect the environment.



5. TRANSMISSION EFFICIENCY

The new 856T benefits from ZF Powershift transmissions available in two types: 4 or 5 speeds. The 5-speed version comes with a lock up clutch torque converter for optimum performance and fuel efficiency.

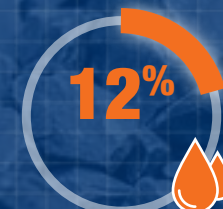
- Auto-shift functionality provides faster acceleration and faster cycle times.
- Kick-down and Forward/Reverse functions ease operation

PERFORMANCE STATISTICS

We don't just talk about toughness and durability, we deliver it. Our machines are held to our highest and most rigorous standards to give you a machine you can trust. Here's stats to prove it.



**225HP NET
POWER RATING**



**FUEL CONSUMPTION
REDUCED BY 12%**



**STAGE V
COMPLIANT**



**6% IMPROVEMENT
IN CYCLE TIMES**

“DESIGNED TO WORK SMARTER”



INTELLIGENT & CONTROL
SMARTER BY DESIGN



DESIGNED TO WORK SMARTER



INTELLIGENT & CONTROL

LiuGong iLink Telematics provides easy access to track instant accurate information of the machine as part of managing the fleet.



1. SEE BIGGER

Graphical display brings all of the integrated multifunction together in an easily accessed way, including machine basic specifications, machine setting, application program and system setting.

- ✔ Easy to operate, user-friendly for improved comfort
- ✔ Intuitive, easy-to-view of machines operating status
- ✔ Real-time monitoring of the working process of loaders, more accurately control the actions of loaders, improving work efficiency
- ✔ Real-time monitoring of various system, reduce service time by keeping operators informed about machine system malfunction and handle quickly
- ✔ Real-time adjusting of engine output power and speed, ensuring engine operate optimally to save energy and reduce environmental impacts
- ✔ Easy to maintenance, remind operator to maintenance the machine on time

TICKS ALL THE RIGHT BOXES

- ✔ **ERGONOMIC LAYOUT**
- ✔ **FULLY PRESSURIZED (XXPA)**



2. EASE AT YOUR FINGERTIPS

- ✔ One-Touch Engine Start/Stop, Start and stop the engine effortlessly with a single touch.
- ✔ Electronic Quick-Change Attachments, Switch attachments in seconds from the cab, enhancing safety and productivity
- ✔ Automatic Boom Height Kick-Out and Bucket Leveling, Easily set from the seat with the touch of a button.



3. PRECISION IN REARVIEW

Electric adjustable rearview mirrors let operators effortlessly fine-tune the mirror angles from inside the cab, ensuring optimal visibility and adaptability to any job site.

- ✔ **ADVANCED AIR-CON AND TEMPERATURE CONTROL**
- ✔ **ENHANCED VISIBILITY**
- ✔ **INTUITIVE INTERFACE**

- ✔ **HIGH COMFORT, FULLY ADJUSTABLE SET**
- ✔ **SUPER QUIET**
- ✔ **SPACE FOR YOUR KIT**

**“ IT’S BEEN DESIGNED BY SOMEONE WHO KNOWS
JUST HOW TOUGH THE JOB CAN BE ”**



COMFORT AND ERGONOMICS
DESIGNED AROUND THE OPERATOR



DESIGNED AROUND THE OPERATOR



COMFORT & ERGONOMICS

Enhanced Comfort and Convenience, experience a 10% larger cabin with 24% more adjustable legroom, complemented by increased storage solutions for your phone, cupholder, paperwork, and other essentials, ensuring a more organized and comfortable workspace.



1. ERGONOMIC DESIGN

From ergonomically positioned non-slip pedals to the multi-functional joystick the cab interior represents a master class in design. Every action requires the minimum effort from the operator.

Finger trip control of the of the hydraulic system, forward and reverse shifting and kickdown functions.



2. THE PERFECT SEAT

- ✓ Four-way steering column for personalized comfort.
- ✓ Easy-to-use joystick pilot control.
- ✓ LCD instrument panel with an intuitive interface.
- ✓ LED-backlit, membrane switch panel on the right-hand pillar for easy access.
- ✓ Standard ventilated, heated air suspension seat with mounted armrest for enhanced comfort.

TICKS ALL THE RIGHT BOXES



ERGONOMIC LAYOUT



CUSTOMIZABLE HYDRAULIC



3. IT'S SO QUIET

The Cab sound level is 69 dB(A), external sound level is 102 dB(A)



4. BREATHE EASILY

Experience superior comfort with our advanced climate control system, featuring 12 all-around vents and intelligent temperature control integrated into the graphical touchscreen display, ensuring perfect working conditions.



5. MAKE IT YOUR PLACE

We never forget that a machine is not just a tool, it's your place for many hours a day (and night). So, we've remembered all the little things that make it feel like home.

- ✓ Cool box for food & drinks
- ✓ Large storage box and rack
- ✓ Drinks holder
- ✓ Phone holder with 12 v charging, USB and AUX ports



ADVANCED AIR-CON AND TEMPERATURE CONTROL



ENHANCED VISIBILITY



INTUITIVE INTERFACE



HIGH COMFORT, FULLY ADJUSTABLE SET



SUPER QUIET



SPACE FOR YOUR KIT

“ JOBSITE SAFETY IS OUR PRIORITY ”



SAFETY & VISIBILITY
DESIGNED TO PROTECT



SAFER IN AND OUT



SAFETY & VISIBILITY

Being protected in the cab is important, but accident research shows us that most accidents occur outside of the machine. We've taken the challenge to make our machines even safer to be around.



1. WATCH YOUR STEP

- Front opening of the left cab door design provides larger walkway area
- Ergonomically-designed steps and handrails in orange, safeguarding the operator during access, exit and maintenance



2. SEE THE DIFFERENCE

- Panoramic view cab with curved front glass
- 120° excellent visibility of the front operating area of the machine

BETTER BY DESIGN

LiuGong's Red Dot Award winning design* team is rapidly building a reputation for un-matched visibility. When you can see more you can do more, whilst protecting yourself and people around the machine. With the New 856T, we've pushed the barriers and taken visibility another step forward.

*4180 D Motorgrader



reddot design award



3. ALL AROUND SAFETY

Optional 360° panoramic view system provides operator with a real-time, all-around view of the area surrounding the machine



4. NO BLIND SPOTS

Two exterior blind spot rear-view mirrors with electric adjustable angle from the cab for increased side and rear visibility



5. BE SAFE, BE SEEN

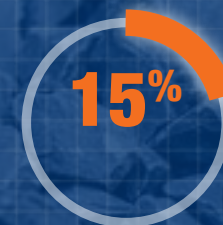
LED work lights for better night visibility are fitted as standard

PERFORMANCE STATISTICS

We don't just talk about toughness and durability, we deliver it. Our machines are held to our highest and most rigorous standards to give you a machine you can trust. Here's stats to prove it.



5-BAR, NON-SLIP
ERGONOMIC STEPS



15% OVERALL
IMPROVEMENT IN
VISIBILITY



REAR-VIEW CAMERA
AS STANDARD



LED WORK LIGHTS
AS STANDARD

**“ WE KEEP YOU WORKING
AND EARNING ”**



UPTIME & MAINTENANCE
DESIGNED TO PROTECT



MAKING EVERY PRODUCTIVE SECOND COUNT



UPTIME & MAINTENANCE

We understand that when your machine's not working, it's not earning. To maximize your productive hours, we've made the New 856T even easier to maintain and surrounded it with service back-up and support to make every productive second count.



1. FAST AND EFFICIENT

All pressure taps and sight gauges are easily accessible. Fluid drains provide environmentally friendly drainage capability and are grouped together for convenient serviceability.



2. EASILY ACCESSIBLE SERVICE POINTS

- Easily visible hydraulic oil level gauge
- Ground accessible, grouped filters
- Easy to reach electronic control box
- Easy to replace A/C filter next to the cab door



3. NEW HIGH-CAPACITY DIESEL TANK

A new 310L fuel tank keep reduces refuelling stops. Its well-positioned suction line achieves 96% utilization even on steep slopes.

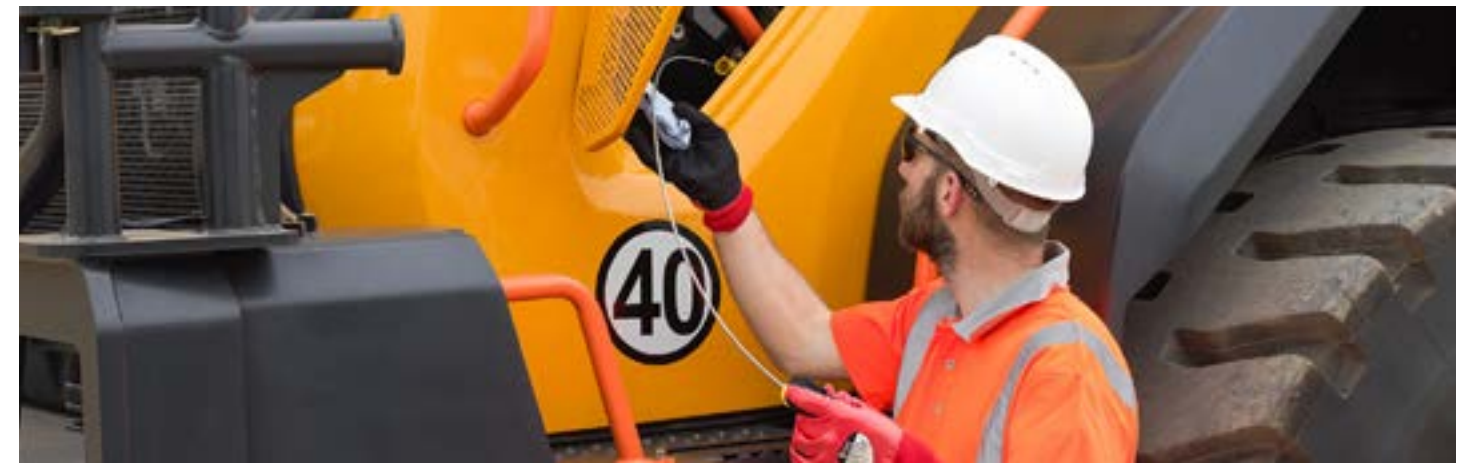


4. TAILOR MADE SUPPORT PACKAGES

From genuine LiuGong parts to full repair and maintenance contracts, we have a flexible choice of support options to suit your business.

IT ALL ADDS UP

With the New 856T we've delivered a tough, intelligent machine that perfectly meets the need of the operator and the owner. Whatever your construction challenge, put LiuGong to the test, we won't let you down.



5. EXPERT SUPPORT

Our machines are supported by an extensive dealer network of over 300 dealers in more than 100 countries. All supported by 13 regional subsidiaries and 17 regional parts depots offering expert training, parts, and service support.



6. OUR SUPPORT PROMISE

Whatever level of support you choose, you can be confident that it is backed up by our service promise.

- Highly trained technicians utilizing the latest diagnostic equipment
- 15,000+ Genuine LiuGong parts available within 24hrs from our European Parts Distribution Center
- Multi-lingual Service helpline and online support
- Transparent estimates and invoicing
- Clear communications through electronic parts catalogue

PERFORMANCE STATISTICS

We don't just talk about toughness and durability, we deliver it. Our machines are held to our highest and most rigorous standards to give you a machine you can trust. Here's stats to prove it.



15,000 + GENUINE PARTS AVAILABLE WITH 24HRS



EASY ACCESS MAINTENANCE POINTS



270L FUEL TANK



300+ DEALER/ SERVICE POINTS



RANGE OF REPAIR AND MAINTENANCE CONTRACTS



17 REGIONAL PARTS DEPOTS

SPECIFICATIONS



856T WHEEL LOADER

Operating weight 19,600 kg (43,211 lbs)

Operating weight includes the machine weight with standard work device, no additional equipment or accessories, full fuel tank, all fluids at required level and an operator 75 kg (165 lbs).

Bucket capacity 2.7 - 5.6 m³ (3.5 - 7.3 yd³)

ENGINE

Description

Cummins EU Stage V-approved, 6.7 liter (1.8 gal), 6-cylinder straight turbocharged diesel engine with common rail fuel injection system Cummins Variable Geometry Turbocharger (VGT) improves engine response at both low and high speed RPM.

Cummins CM2350 (improved microprocessor and memory) ECM lever latch connections. Integrated DEF controller.

Auto idle – saves fuel, idle time is 10 mins, idle speed at 700 rpm.

Air cleaning: Cummins direct flow air filter.

Cooling system: Air-to-air intercooler, hydraulic motor drive and temperature controlled fan.

Emission rating	EU Stage V
Make	Cummins
Model	B 6.7

Engine Output - Max Gross (SAE J1995 / ISO 14396) 183 kW (245 hp) @ 1,700 rpm

Engine Output - Rated Net (SAE J1349 / ISO 9249) 168 kW (225 hp) @ 2,000 rpm

Peak torque 1,186 N·m (874 lbf·ft)

Displacement 6.7 L (1.8 gal)

Number of cylinders 6

Aspiration Turbocharged & Air-to-air intercooled

AXLES

Model	AWL700 (Wet type)
Differential front type	Limited slip
Differential rear type	Limited slip
Axle oscillation	±12°

TRANSMISSION

Standard

Torque converter: single-stage, three elements. Transmission: ZF 4BP210 countershaft transmission F4/R3, electro proportional valve, continuous power in gears shift and less compact.

Gear shifting system: ZF Ergopower Power Shift with auto modes (1~4/2~4) all start in gear 2, automatically downshift one gear according to load changing condition, faster and better for long distance material transport.

Transmission type	Countershaft, power shift
Torque converter	Single stage, three elements
Max. travel speed, fwd	37.7 km/h (23.4 mph)
Max. travel speed, rev	25 km/h (17.2 mph)
No. of speed, fwd/rev	4/3

Option

Torque converter: single-stage, three elements. Transmission: ZF 5WG 210 countershaft transmission F5/R3, electro proportional valve, continuous power in gears shift and less compact.

Gear shifting system: ZF Ergopower Power Shift with auto modes (1~5/2~5) all start in gear 2, automatically downshift one gear according to load changing condition, faster and better for long distance material transport.

Transmission type	Countershaft, power shift
Torque converter	Single stage, three elements
Max. travel speed, fwd	38.5 km/h (24 mph)
Max. travel speed, rev	27.7 km/h (17.2 mph)
No. of speed, fwd/rev	5/3

BRAKES

Description

Two independent brake circuits, disks out of rim, accurate control with the advanced main valve & piston pump.

Service brake type	Wet disc brake, two independent circuits
Service brake actuation	Fully hydraulic
Parking brake type	Drum
Parking brake actuation	Electro-hydraulic release

HYDRAULIC SYSTEM

Description

System supply: Two load-sensing axial piston pumps with variable displacement. The steering function always has priority. Valves: Double-acting 3-spool valve. The main valve is controlled by a 3-spool pilot valve.

Lift function: The valve has four positions: lift, hold, lower, and float. Inductive/magnetic automatic boom kick-out can be switched on and off and is adjustable to two positions: bucket at ground Level and maximum reach full lifting height.

Tilt function: The valve has three functions: rollback, hold and dump. Cylinders: Double-acting cylinders for all functions.

Filter: Full-flow filtration through 12 micron (absolute) filter cartridge.

Main pump type	Piston
Main relief pressure	30±0.3 MPa (3,191± 43.5 psi)
Raise	5.1 s
Dump time	3.0 s
Float down time	1.5 s
Fastest total cycle time	9.6 s
Controls	Joystick or 3 levers

SERVICE REFILL CAPACITY

Fuel Tank	310 L (81.9 gal)
Engine Oil	19 L (5 gal)
Cooling System	35 L (9.2 gal)
Hydraulic System	140 L (37 gal)
Transmission and Torque Converter	35 L (9.2 gal)
Axles, Each	30 L (7.9 gal)
DEF Tank	50 L (13.2 gal)

STEERING

Description

Steering system: Load-sensing hydraulic articulated steering.

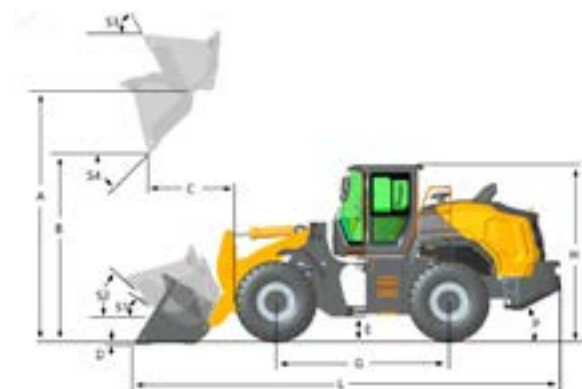
System supply: The steering system has priority feed from a load-sensing axial piston pump with variable displacement, Dual-pump confluence & Steering priority.

Steering cylinders: Two double-acting cylinders.

Steering configuration	Articulated
Steering relief pressure	20.7±0.3 MPa (3,002 ± 43.5 psi)
Steering cylinders	2
Cylinder bore	90 mm (4")
Rod diameter	50 mm (2")
Stroke	403 mm (1'4")
Maximum flow	140 L/min (37 gal/min)
Maximum articulation	±38°
Smallest turn (over tire)	6,304 mm (20'7")

DIMENSIONS

E Ground clearance	421 mm (1' 5")
G Wheelbase	3,370 mm (11'1")
H Cab height	3,410 mm (11' 2")
J Wheel tread	2,150 mm (7'1")
K Width over tires	2,750 mm (9')
L Length with bucket down	8,350 mm (27'5")
M Turn angle, either side	38°
P Rear angle of departure	28°
R ₁ Turning radius, bucket carry	7,060 mm (23'1")
R ₂ Turning radius, outside of tire	6,304 mm (20'8")
W Width over bucket	2,920 mm (9'7")



ELECTRICAL SYSTEM

Description

Central warning system is a centralized electrical system with central warning light and buzzer for following functions: Serious engine fault, Low steering system pressure, Interruption in communication (computer failure), Low engine oil pressure, High engine oil temperature, High charge-air temperature, Low coolant level, High coolant temperature, Low transmission oil pressure, High transmission oil temperature, Low brake pressure, Engaged parking brake, Brake charging failure, High hydraulic oil temperature.

Voltage	24 V
Batteries	2 x 12 V
Battery capacity	200 Ah
Cold cranking capacity, approx	1100 A
Reserve capacity	430 min
Alternator rating	1,680 W / 70 A
Starter motor output	7.8 kW (10.5 hp)

CAB

Description

Instrumentation: All important information is centrally located in the central instrument panel and operator's field of vision. Large curved front glass, rear view camera and mirrors ensure great visibility.

Four-way adjustable steering column, air suspension seat, four-way adjustable console and Denso A/C with all around air outlets.

Pressurized cab with lower interior noise. The cab is tested and approved according to ROPS (ISO 3471), FOPS (ISO 3449).

LOADER ARM PERFORMANCE

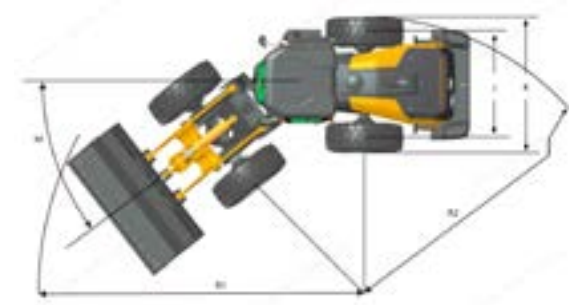
Description

Tipping Load data is calculated with standard bucket at 3.1 m³ (4.1 yd³) and operating weight at 18,600 kg (41,006 lb).

Tipping load - straight according to ISO 14397-1:2007	14,600 kg (32,187 lbs)
Tipping load – full turn according to ISO 14397-1:2007	12,940 kg (28,528 lbs)
Bucket breakout force	168 kN (37,768 lbf)
A Maximum hinge pin height	4,210 mm (13'10")
B Dump clearance at full height discharge	2,970 mm (9'9")
C Dump reach at full height discharge	1,240 mm (4'1")
D Maximum digging depth, bucket level	82 mm (3")
S ₁ Bucket rollback at ground level	42.7°
S ₂ Bucket rollback at carry	46.6°
S ₃ Bucket rollback at maximum height	63°
S ₄ Maximum dump angle at full height	45°

SOUND & ENVIRONMENT


Sound level in cab according to ISO 6396-2008/EN ISO 3744-1995	69 dB(A)-- Travel mode
Sound level in cab according to ISO 6396-2008/EN ISO 3744-1995	69 dB(A)-- Stationary work cycle mode
External sound level according to ISO 6395-2008	102 dB(A)-- Travel mode
External sound level according to ISO 6395-2008	102 dB(A)-- Stationary work cycle mode
Ventilation	10 m ³ /min (13.1 yd ³ /min)
Heating capacity	5.8 kW (7.8 hp)
Air conditioning	5 kW (6.7 hp)



STANDARD EQUIPMENT

TIRES




Choosing the right tyres for your machine will become a key competitive advantage to achieve outstanding performance. Through close engineering and development cooperation with renowned and carefully selected suppliers, LiuGong can offer full range of tyres specially tailored for wheel loader.

Code	Application	Patterns	Size	PR / *	Tube Type	Width	Overall Diameter	Tread Depth	Load Capacity, 50 km/h / 10 km/h (31.1 mph / 6.2 mph)
L3	<ul style="list-style-type: none">in sand operationin all kind of load/carry operationthe L3-tread is not as open as L2 and has consequently less self-cleansing compared with an L2 tyre		23.5 - 25	16	TL	595 mm (1' 11")	1,615 mm (5' 4")	35 mm (1")	6,150 / 9,500 kg (13,558.4 / 20,943.9 lb)
			23.5 - 25	20	TL	595 mm (1' 11")	1,615 mm (5' 4")	35 mm (1")	7,300 / 10,900 kg (16,093.7 / 24,030.4 lb)
			23.5 - 25	24	TL	595 mm (1' 11")	1,615 mm (5' 4")	35 mm (1")	8,000 / 13,200 kg (17,637 / 29,101 lb)
			23.5 R 25	*	TL	600 mm (2")	1,617 mm (5' 4")	36 mm (1")	7,100 / 12,150 kg (15,652.8 / 26,786.1 lb)
			23.5 R 25	**	TL	600 mm (2")	1,617 mm (5' 4")	36 mm (1")	9,250 / 14,500 kg (20,392.7 / 31,967 lb)
L5	<ul style="list-style-type: none">in very aggressive material where good protection against cut damages is demanded, e.g. in quarries or mines		23.5 R 25	*	TL	600 mm (2')	1,704 mm (5' 7")	78 mm (3")	12,150 kg, 10 km/h (26,786.1 lb, 6.2 mph)
			23.5 R 25	**	TL	600 mm (2')	1,704 mm (5' 7")	78 mm (3")	14,500 kg, 10 km/h (31,967.03 lb, 6.2 mph)

Note: The radial tire-load bearing capacity is indicated by the number of stars (*). More stars, greater radial tire-load bearing capacity. For the specific radial tire sizes listed in the table above, 2 stars (**) represents the maximum radial tire-load bearing capacity.

ATTACHMENTS

LiuGong attachments with pin-on or quick-coupler ensure high quality. The integrated design of the system creates a perfect match to achieve superior productivity.

Type	Capacity	Width	Height	Digging Depth	Dump Clearance	Dump Reach	Description	Attachment Drawing
General Purpose	2.7 m³ (3.5 yd³)	2,970 mm (9'9")	1,309 mm (4'4")	50 mm (2")	3,074 mm (10'1")	1,198 mm (3'11")	Anti-Wear Blade with Welded Teeth.	
	3.0 m³ (3.9 yd³)	2,970 mm (9'9")	1,343 mm (4'5")	50 mm (2")	3,031 mm (9'11")	1,241 mm (4'1")	Anti-Wear Blade with Bolt-on Cutting Edge and Bolt-on Teeth.	
	3.3 m³ (4.3 yd³)	2,970 mm (9'9")	1,411 mm (4'8")	50 mm (2")	2,929 mm (9'7")	1,343 mm (4'5")	Bolt-on Cutting Edge; Bolt-on Teeth; Bolt-on Cutting Edge and Bolt-on Teeth.	
	3.5 m³ (4.6 yd³)	2,970 mm (9' 9")	1,467 mm (4'10")	50 mm (2")	2,929 mm (9'7")	1,343 mm (4'5")	Bolt-on Cutting Edge; Bolt-on Teeth.	
	4.2 m³ (5.5 yd³)	3,210 mm (10'6")	1,446 mm (4'9")	50 mm (2")	2,951 mm (9'8")	1,322 mm (4'4")	Bolt-on Cutting Edge.	
Light Material	4.2 m³ (5.5 yd³)	3,160 mm (10'4")	1,663 mm (5'5")	82 mm (3")	2,823 mm (9'3")	1,403 mm (4'7")	Bolt-on Cutting Edge.	
	4.7 m³ (6.1 yd³)	3,160 mm (10'4")	1,663 mm (5'5")	82 mm (3")	2,727 mm (8'11")	1,500 mm (4'11")	Bolt-on Cutting Edge.	
	5.6 m³ (7.3 yd³)	3,160 mm (10'4")	1,593 mm (5'3")	82 mm (3")	2,798 mm (9'2")	1,429 mm (4'8")	Bolt-on Cutting Edge; Bolt-on Cutting Edge and Welded Teeth.	
Rock	2.7 m³ (3.5 yd³)	2,880 mm (9'5")	1,450 mm (4'9")	98 mm (4")	3,041 mm (10')	1,220 mm (4'0")	V-Shape Anti-Wear Blade.	
Grapple	Φ1,000 mm (Φ3'7")	2,142 mm (7')	1,647 mm (5'5")	79 mm (3")	1,162 mm (3'10")	2,508 mm (8'3")	Aligned Teeth.	
	Φ350 mm (Φ1'1")	2,624 mm (8'7")	1,488 mm (4'11")	301 mm (1')	1,623 mm (5'4")	2,783 mm (9'2")	Crossed Teeth.	
	Φ1,400 mm (Φ4'7")	2,840 mm (9'4")	1,955 mm (6'5")	62 mm (2.5")	1,270 mm (4'2")	2,423 mm (7'11")	Crossed Teeth.	

ENGINE

- Cummins B6.7, Engine EU Stage V Engine output- rated net power 168 kW (225 hp) airto-air intercooled, 6 cylinders, 4 stroke
- High Pressure Common Rail
- Exhaust emission control
- Rotary air filter, fuel filter
- Intelligent Power Control (IPC)
- Hydraulic driven reversible fan
- Grid heater

TRANSMISSION

- ZF 4BP210 transmission
- Kick-down function, FNR, F4/R3
- Transmission oil level sight gauge
- Secondary oil filter, oil stick
- Remote pressure taps for diagnostics
- Auto shifting mode by speed
- Interlock between parking brake and gearshifting

AXLE

- LiuGong wet axle with limited slip differentials
- Wet discs service brake system
- Parking brake service as secondary

HYDRAULIC SYSTEM

- Two piston pumps with variable displacement. Hydraulic load-sensing according to demand
- Electric Proportional Controller
- Third valve and multipurpose lines
- Boom kick-out, automatic
- Bucket positioner, automatic
- Plug at the port of bucket and boom cylinder for pressure check
- Emergency boom lower via pilot accumulator
- Ride control

STEERING SYSTEM

- Load sensing system with flow amplification and steering priority
- Emergency steering system

ELECTRICAL SYSTEM

Two LED front headlights with high&low beams and turn signal	<input type="checkbox"/>
Four LED work lights on the front top of cab	<input type="checkbox"/>
Two rear headlight on top of cab	<input type="checkbox"/>
Turn signals with flasher	<input type="checkbox"/>
Batteries, free of maintenance	<input type="checkbox"/>
Cigarette lighter, 24 V power outlet	<input type="checkbox"/>
Electric horn	<input type="checkbox"/>
Front and rear windshield wiper	<input type="checkbox"/>
Electronic device compartment	<input type="checkbox"/>
Back-up alarm	<input type="checkbox"/>
License-plate bracket and light	<input type="checkbox"/>

GAUGE GROUP

Engine coolant temperature	<input type="checkbox"/>
Transmission oil temperature	<input type="checkbox"/>
Fuel level	<input type="checkbox"/>
Hour meter	<input type="checkbox"/>
Voltage	<input type="checkbox"/>
Brake oil pressure	<input type="checkbox"/>

INDICATOR GROUP

Air inlet heater	<input type="checkbox"/>
Battery charging	<input type="checkbox"/>
Parking brake applied	<input type="checkbox"/>
Machine emergent stop	<input type="checkbox"/>
Power cut-off	<input type="checkbox"/>
Engine servicing	<input type="checkbox"/>
Turning lights	<input type="checkbox"/>
Engine starter running	<input type="checkbox"/>
Beam of front light	<input type="checkbox"/>

TYRE & RIM

23.5R25*/L3 Radial tire	<input type="checkbox"/>
Full fender	<input type="checkbox"/>

CHASSIS FRAME

Spacious central articulation arrangement with conic bearing	<input type="checkbox"/>
Articulation locking bar	<input type="checkbox"/>
Tow hitch	<input type="checkbox"/>
Rubber cushion articulation stops	<input type="checkbox"/>

ELECTRICAL SYSTEM

Certified FOPS (ISO 3449) and ROPS (ISO 3471) cab	<input type="checkbox"/>
Electric heated air suspension seat	<input type="checkbox"/>
Electric heated rear-view mirrors	<input type="checkbox"/>
4 way adjustable steering column	<input type="checkbox"/>
Large curved front glass	<input type="checkbox"/>
Viscous cab mounts	<input type="checkbox"/>
Cab fresh air filter	<input type="checkbox"/>
Rear-view camera display	<input type="checkbox"/>
Air conditioner	<input type="checkbox"/>
Lunch-box/cooler holder	<input type="checkbox"/>
One beverage holder	<input type="checkbox"/>
Cab rear windshield defroster	<input type="checkbox"/>
Sun visors	<input type="checkbox"/>
Fire extinguisher	<input type="checkbox"/>
File pocket	<input type="checkbox"/>

LINKAGE & ATTACHMENTS

Z-bar linkage	<input type="checkbox"/>
---------------	--------------------------

OPTIONAL EQUIPMENT



ENGINE SYSTEM

Cold starting kit (-35°C) ☐

TIRE & RIM

See tires options ☐

Tire protection chain ☐

Normal fender ☐

CAB

Front windshield screen (must be mounted at factory) ☐

Cab dust removal device ☐

Two exterior rear-view mirrors with blind spot (electric adjustable angle in cab); ☐

LINKAGE & ATTACHMENTS

Quick coupler ☐

Additional counterweight ☐

High/extra-high linkage ☐

Bolt-on wear-resist blade and teeth ☐

Rock bucket ☐

Grapple with aligned or crossed teeth ☐

Fork ☐

Snow blade ☐

OTHERS

Automatic central lubrication ☐

Weight scale (Electric load weigher) ☐

Hood protective guard ☐







Guangxi LiuGong Machinery Co., Ltd.

No. 1 Liutai Road, Liuzhou, Guangxi 545007, PR China
T: +86 772 388 6124 E: overseas@liugong.com
www.liugong.com

Like and follow us:



LG-PB-EU-922F 924F-44-102021-ENG

The LiuGong series of logos herein, including but not limited to word marks, device marks, letter of alphabet marks and combination marks, as the registered trademarks of Guangxi LiuGong Group Co., Ltd. are used by Guangxi LiuGong Machinery Co., Ltd. with legal permission, and shall not be used without permission. Specifications and designs are subject to change without notice. Illustrations and pictures may include optional equipment and may not include all standard equipment. Equipment and options varies by regional availability.