



| | |
|---------------------------------|---|
| Engine | Yanmar 4NV98CT-NLYS |
| Gross Power | 53.7 kW (72 hp / 73 ps) @ 2,400 rpm |
| Net Power | 51.1 kW (68.5 hp / 69.5 ps) @ 2,400 rpm |
| Breakout Force | 25 kN |
| Rated Operating Capacity | 998 kg |
| Bucket Capacity | 0.5 m ³ |
| Operating Weight | 4,200 kg |

378C

COMPACT TRACK

LOADER

378C SPECIFICATIONS >>>

ENGINE

| | |
|---------------------|---|
| Emission Regulation | Tier 4f / Stage V |
| Manufacturer | Yanmar |
| Model | 4NV98CT-NLYS |
| Gross Power | 53.7 kW (72 hp / 73 ps) @ 2,400 rpm |
| Net Power | 51.1 kW (68.5 hp / 69.5 ps) @ 2,400 rpm |
| Peak Torque | 291 N · m @ 1,625 rpm |
| Number of Cylinders | 4 |
| Displacement | 3.319 L |
| Cooling Type | Water |

ELECTRICAL SYSTEM

| | |
|-------------------|---------|
| System Voltage | 12 V |
| Alternator Output | 85 amps |

TRACK & CHASSIS

| | |
|-----------------|-------------|
| Track on Ground | 1,425 mm |
| Shoe Width | 320 mm |
| Ground Pressure | 40.5 kPa |
| Track Size | 320×86BL×50 |

HYDRAULIC SYSTEM

| | |
|--------------------------------|----------|
| System Type | Open |
| Standard Flow | 70 L/min |
| Traveling Hydrostatic Pressure | 35 MPa |
| Working Hydrostatic Pressure | 21 MPa |
| Hydraulic Cycle Time, total | 8.5 s |
| Raise | 4 s |
| Dump | 2 s |
| Lower (float down) | 2.5 s |

OPERATING WEIGHT

| | |
|------------------|----------|
| Operating Weight | 4,200 kg |
|------------------|----------|

PERFORMANCE

| | |
|---|----------|
| Static Tipping Load | 2,850 kg |
| Rated Operating Capacity | 998 kg |
| Boom Breakout Force | 24 kN |
| Bucket Breakout Force | 25 kN |
| Dump Clearance at Full Height Discharge | 2,580 mm |
| Dump Reach at Full Height Discharge | 882 mm |
| Maximum Dump Angle at Full Height | 39° |
| Maximum Hinge Pin Height | 3,300 mm |
| Bucket Rollback at Ground Level | 30° |
| Ground Clearance | 195 mm |
| Angle of Departure | 25° |
| Front Clearance Radius with Bucket | 2,117 mm |

SERVICE CAPACITIES

| | |
|------------------------|--------|
| Fuel Tank | 100 L |
| Engine Oil | 9.4 L |
| Cooling System | 20 L |
| Hydraulic Reservoir | 36.4 L |
| Hydraulic System Total | 48.6 L |

OPTIONAL ATTACHMENTS

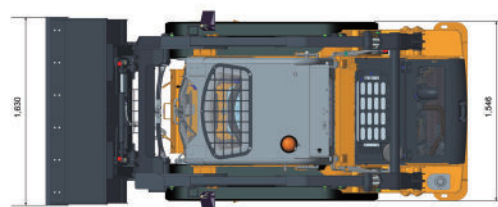
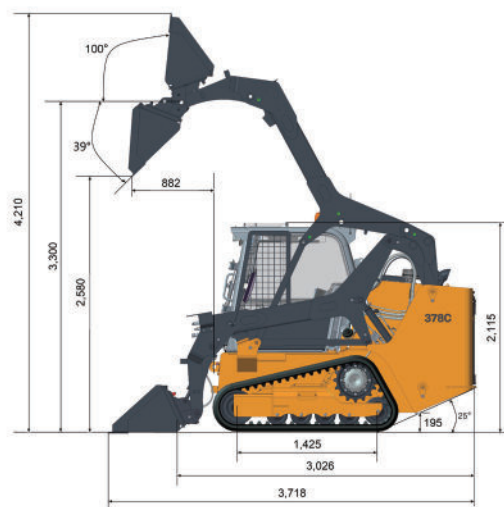
| | |
|------------------------------|-------------------|
| 4 in 1 Bucket – 0.5 m³ | Auger |
| Rock Bucket – 0.4 m³ | Snow Blade |
| Scrap Bucket – 350 to 650 mm | Pick - up Sweeper |
| Hydraulic Hammer | Hydraulic Shear |
| Fork | Lift Boom |

STANDARD EQUIPMENT

| |
|--------------------------|
| General Bucket –0.5 m³ |
| Control Safety Interlock |
| Boom Interlock |
| Quick Coupler |
| Open ROPS/FOPS Cab |

OPTIONAL EQUIPMENT

| |
|--------------------------------|
| Enclosed ROPS/FOPS Cab with AC |
| Shoe Width--400 mm |
| Heater |
| A/C |



Guangxi Liugong Machinery Co., Ltd.

No. 1 Liutai Road, Liuzhou, Guangxi 545007, PR China
T: +86 772 3886124 E: overseas@liugong.com
www.liugong.com

Specifications and designs are subject to change without notice. Machines shown may include optional equipment. Liugong standard and optional equipment may vary from region to region. Please consult your Liugong dealer for information specific to your area. Engine power kW is converted to horsepower (1 kW=1.3596 ps and 1 kW=1.3410 hp) in this file.

05/2023 Designed by Liugong