

 **DRESSTA**

# TD-25M

**CRAWLER DOZER**

**TIER III/Stage IIIA**

**ENGINE:**

CCEC QSNT-C375S30

**POWER:**

246 kW  
(330 hp)

**OPERATING  
WEIGHT:**

40 000 kg

**BLADE  
CAPACITY:**

9.6 m<sup>3</sup>  
(12.5 yd<sup>3</sup>)





# PUSHING THE LIMITS TO PUT YOU FIRST

With the New TD-25M we set ourselves the challenge to deliver the ultimate operator experience. A superior, safe, and comfortable cab designed for easy operation. High visibility, easy access maintenance, but above all, the real power and flexibility you need to push, rip and grade again and again.

In the mine, in the quarry, on the highway or in any heavy-weight application, climb into the cab and you'll know you've made the right choice.

**WE DESIGN OUR MACHINES AROUND YOU TO HELP YOU DO MORE, IN SAFETY AND COMFORT.**

*Christopher, Product Engineer*





**DESIGN**



**POWER**



**VISIBILITY**



**ENDURANCE**



# EVERYTHING IS DESIGNED AROUND YOU.

## MAKE YOURSELF AT HOME

New deluxe seat with heated option, advanced climate control, new high-efficiency shock absorbers to reduce noise and vibration. Integrated ROPS & FOPS, intuitive operator's interface with ergonomic joysticks for finger-tip control.

1.

## ENHANCED VISIBILITY

33% more glass surface area, a tapered engine hood presenting clear sightlines to the blade corners, a rear-view camera, and additional ripper lighting.

2.

## PERFECT POWER TURNS

Unique 2-speed steering drive maximises productivity by delivering 100% of the engine's power to both tracks, allowing you to push a full load through turns with near perfect load retention.

3.

## CLASS-LEADING DRAWBAR POWER

665kN of drawbar pull delivered through the perfect combination of a 3-speed power shift transmission and 2-speed steering drive.

4.

## TOTAL MOTION CONTROL

Travel speed pre-selection and automatic down-shifting mode improves performance and efficiency.

5.

## THE ULTIMATE BLADE CONTROL

The new electro hydraulically controlled proportional joystick creates a new level of blade control and accuracy.

6.

## FASTER CYCLE TIMES

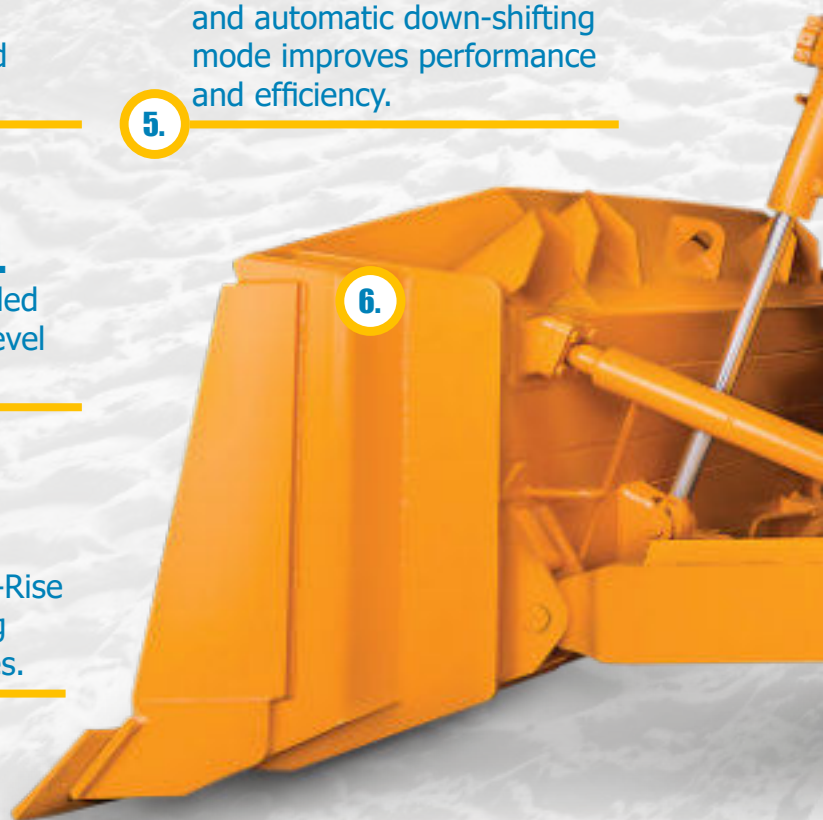
Improved blade control, Ripper Auto-Rise function and an efficient load sensing system combine to reduce cycle times.

7.

## THE RIGHT TRACKS FOR EVERY APPLICATION

Our single grouser track shoes are perfect for standard or heavy-duty applications. In addition, we offer self-cleaning tracks for landfill applications.

8.





## HIGHER UPTIME, LOWER COST

Modular component layout with safe, easy access to maintenance points.  
Lifetime lubricated rollers, heavy duty chains and idlers for extended track life  
all combine to reduce maintenance costs.

9.



**THAT'S THE PREVIEW –  
LET'S POWER ON INTO THE DETAIL.**

# AWESOME POWER

Dozing power is one of our core values and the new TD-25M takes power to a new level.

At the heart of this awesome dozer beats a turbocharged CCEC QSNT-C375S30, 280 kW (375 hp) in-line engine, compliant to EPA Tier 3/EU Stage IIIA emissions regulations.

The combination of DRESSTA expertise with the latest heavy-duty diesel design delivers higher peak torque and exceptional fuel efficiency, giving you the confidence to take on the toughest jobs without breaking a sweat.



**665KN OF  
DRAWBAR PULL**



**3-SPEED POWER SHIFT  
TRANSMISSION AND  
2-SPEED STEERING DRIVE**



**PERFECT POWER  
TO WEIGHT RATIO**



**VARI-SPEED HYDROSTATIC  
COOLING FAN**

**“NEVER COMPROMISE - THE TD-25 GIVES  
YOU AWESOME POWER AND EFFICIENCY”**

*Stan, Site Manager*







## SELECTABLE OPERATING MODES

Two pre-set modes, make it even easier to save fuel by reducing repetitive gear changing.

**Power Mode** is perfect for achieving faster cycle times in tough dozing conditions utilizing first gear forward motion and second gear reverse.

**Eco Mode** is ideal for lighter work utilizing second gear in both directions.

Simply choose the mode to match your task and let the machine do the rest.









# EASY ON THE OPERATOR

We think your job is tough enough which is why our cab has been designed to let you work with ease and comfort. With 33% more glass surface area, a tapered engine hood presenting clear sightlines to the blade corners, a rear-view camera, and additional ripper lighting, it's easy to see how the TD-25M offers the very best all-round visibility.

The cab environment is ultra-quiet at 78 dB(A) and benefits from a deluxe seat, advanced climate control, integrated ROPS & FOPS, improved operator's interface, new ergonomic joysticks controls, a high visibility LCD in-cab display and Bluetooth connectivity. When it comes to comfort and safety, we put you first.

**ULTRA LOW-  
NOISE CAB**



**IMPROVED VISIBILITY**



**ROPS & FOPS**



**AIR SUSPENSION SEAT &  
ERGONOMIC CONTROLS**



**MULTI-FUNCTIONAL  
JOYSTICK**



**LARGE HIGH  
RESOLUTION DISPLAY**



**“IF IT MAKES MY LIFE EASIER –  
I’M A FAN!”**

*Adam, Dozer Operator*





# THE ULTIMATE RANGE OF RIPPERS

Whether it's general construction, road building, mining or site clearing, versatility is the name and Dressta have it covered with a range of rippers for every application.

## RIP IT UP!

Built to exacting standards for durability from the toughest tungsten-steel alloys, our rippers can take some beating.



**SINGLE-SHANK RIPPER:** 1,250 mm penetration.  
**MULTI-SHANK:** 915 mm penetration.

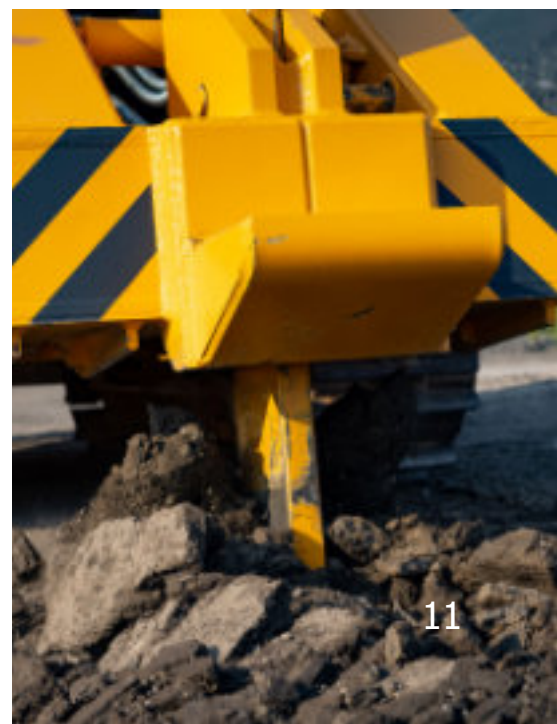
Hydraulically controlled ripper shank pin puller allows you to adjust ripper penetration depth from the cab.

**"YOU CAN HAVE 100% CONFIDENCE  
IN OUR AWESOME ATTACHMENTS"**

*Nikka, Technical Specialist*











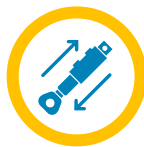


# COMMAND & CONTROL

We've made it easy for you to harness the awesome power of the New TD-25M. With a new, variable hydraulic system you can reduce overall fuel consumption by 5% with a corresponding drop in emissions.

Intelligent Blade Control Modes, Ripper and Auto-Rise function and efficient Load Sensing technology combine to reduce cycle times and improve operational performance. Compatible with world-leading control and connectivity solutions from Leica, Topcon and Trimble, the new TD-25 makes it easy to get the most out of every push.

**WORLD-CLASS  
HYDRAULICS**



**INTELLIGENT BLADE  
SPEED MODE**



**REDUCE FUEL  
CONSUMPTION BY 5%**



**RIPPER AND  
AUTO-RISE FUNCTIONS**



**“THIS PROVES THAT TOUGH  
MACHINES CAN BE INTELLIGENT TOO”**

*Tolga, Key Account Manager*





# AT YOUR SERVICE 24/7

With the New TD-25M we've made daily checks and maintenance easy. Engine and hydraulic oil checks, coolant checks and grease point checks can all be done quickly and safely keeping you working and earning.

Our machines are backed up by one of the most comprehensive warranties in the industry, with the option of an extended warranty for the ultimate peace-of-mind.

Our skilled and experienced dealer network is supported by a global parts network, with seven regional distribution centres and advanced logistics system. This service team is there for you 24/7 with advice, technical support, and genuine parts where you need them and when you need them.



**FAST & SIMPLE  
MAINTENANCE**



**PROACTIVE DEALER  
NETWORK**



**FAST AND EASY  
PARTS SUPPLY**



**COMPREHENSIVE  
WARRANTY**



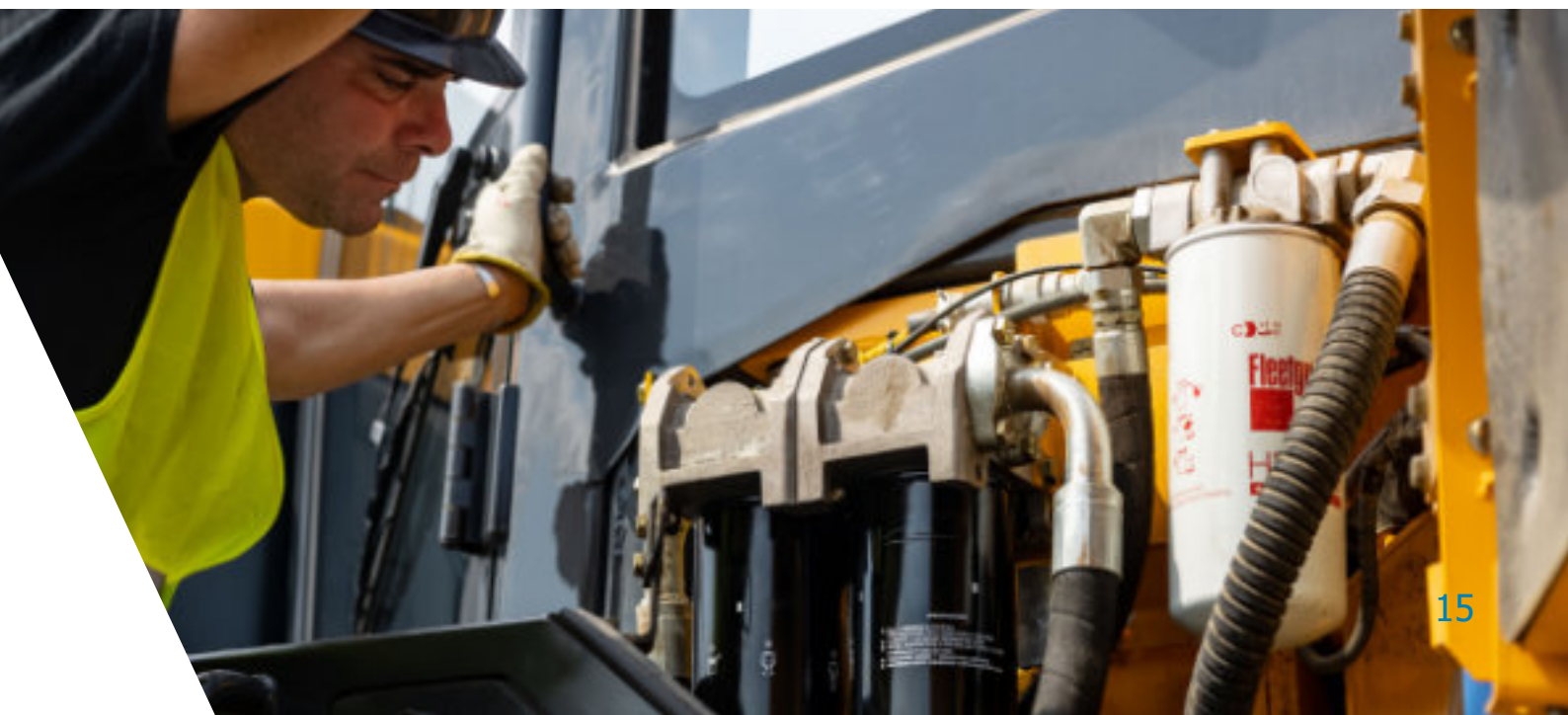
**MAINTENANCE FREE  
EQUALIZER BARS**

**“WHEREVER YOU ARE, WHATEVER YOU  
ARE DOING, DRESSTA IS COMMITTED TO  
CREATING THE BEST SUPPORT EXPERIENCE.  
THAT'S THE DRESSTA PROMISE”**

*Waldemar, Product Manager*















# THE HEART OF ENDURANCE

Endurance is the heart of Dressta. Our machines are designed and built to last. The TD-25 takes endurance to a new level.

Every weld and every component are rigorously tested to the limit and beyond. Its tough frame and versatile undercarriage have been designed and engineered to absorb shattering impacts with ease. The hydraulics are armed with even greater protection from impact and debris. The blade and ripper have been strengthened to withstand the incredible forces and impacts of the toughest terrain. The engine is protected from dust and debris by a hydraulically driven, variable speed fan. A dozer is only as strong as its weakest point – and at Dressta – **we don't do weakness.**

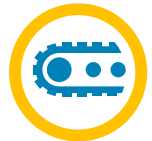
**TOUGH FRAME  
BUILT TO ABSORB  
HIGH IMPACT SHOCK**



**ENGINE PROTECTED BY  
HYDRAULICALLY DRIVEN,  
VARIABLE SPEED FAN**



**TOUGH, VERSATILE  
UNDERCARRIAGE**



**FULLY PROTECTED  
HYDRAULICS**



**STRONGER RIPPER  
AND BLADE**



**“DRESSTA HAVE MACHINES THAT HAVE BEEN OPERATING FOR OVER 30 YEARS IN INCREDIBLY TOUGH CONDITIONS – ENDURANCE ISN'T MEASURED IN WORKING HOURS, IT IS MEASURED IN DECADES.”**

*Carlos, Dozer Operator*





# SPECIFICATIONS

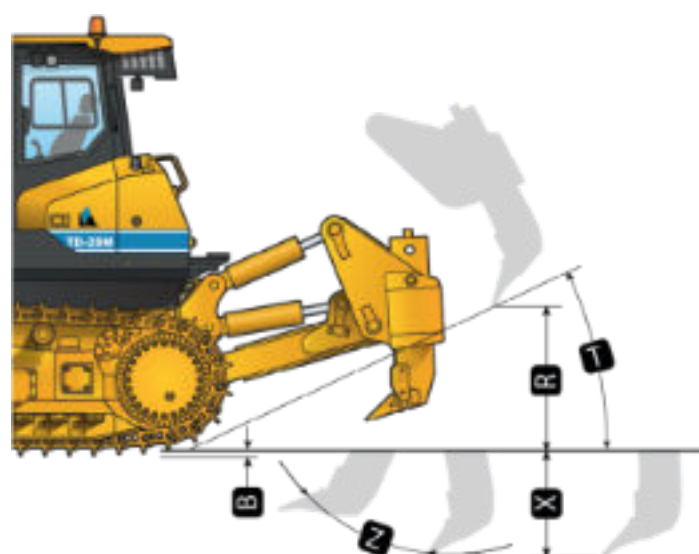
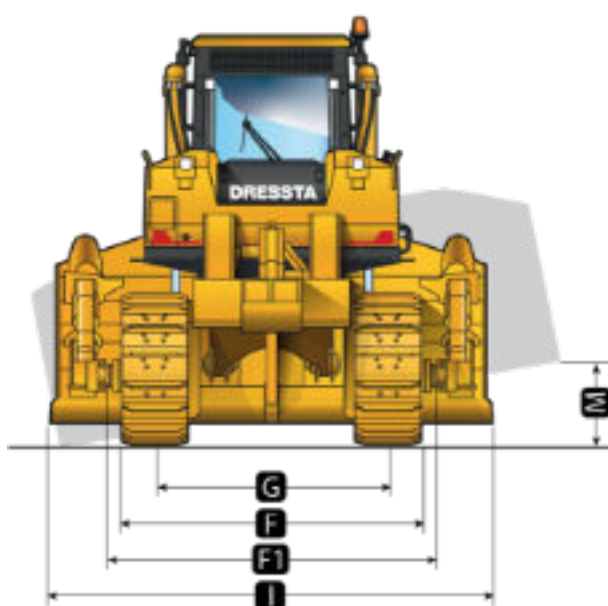
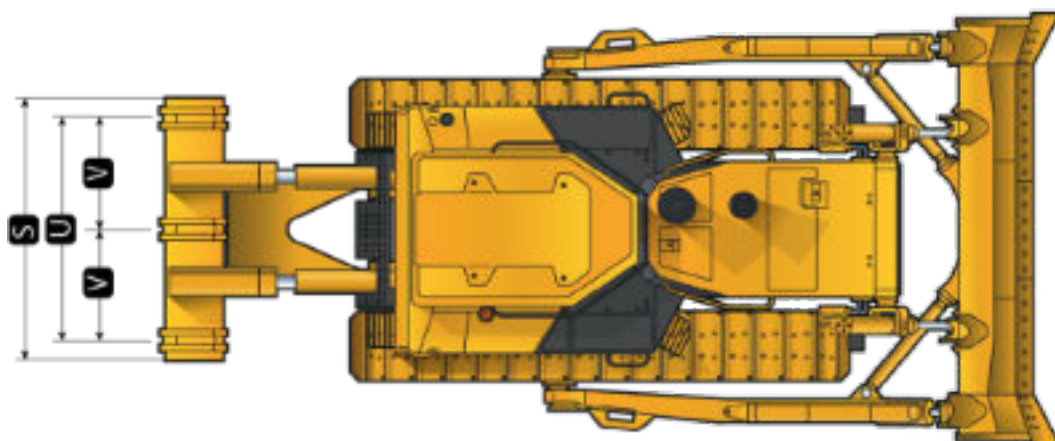
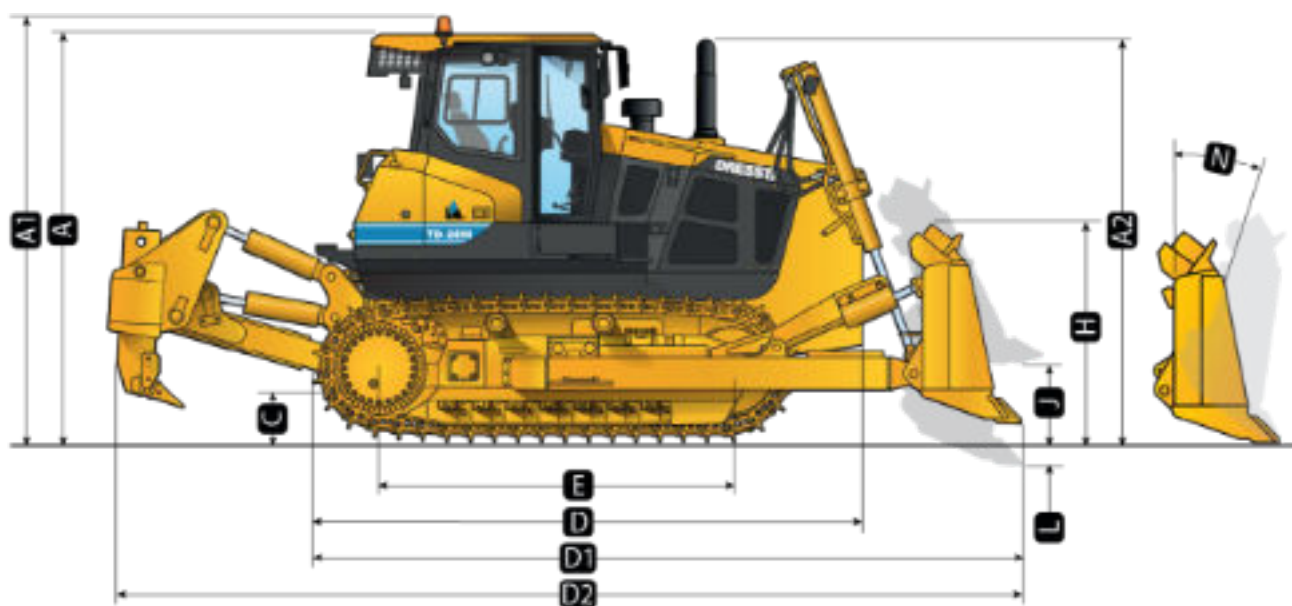
MODEL	NEW TD-25M
<b>ENGINE</b>	
<b>TYPE</b>	<b>EPA Tier 3/EU Stage IIIA</b>
Make and model	CCEC QSNT-C375S30
Emissions standard	EPA Tier 3/EU Stage IIIA
Displacement	14 l (854 in3)
Gross horsepower, SAE J1995	280 kW (375 hp)
Net horsepower, SAE J1349/ISO 9249 at the max. speed of hydraulic fan	246 kW (330 hp)
Rated rpm of the engine horsepower	246 kW (330 hp) @ 2000 rpm
Max. torque	1825 Nm (1,346 lb-ft) @ 1400 rpm
<b>UNDERCARRIAGE</b>	
Type	Rigid
Suspension	Oscillation-type with equalizer bar and forward mounted pivot shafts.
Tracks	Large deep-heat-treated, sealed, and lubricated track links and through-hardened, sealed, and lubricated rollers for maximum wear resistance.
Track gauge	2240 mm (7,02 ft)
Track shoe width	560 mm (22 in.)
Chain	Sealed and lubricated
Shoes, each side	42
Track rollers, each side	7
Bogies, each side	-
Track length on ground	3245 mm (10 ft 7 in.)
Ground contact area	36334 cm2 (5633,33 sq. in.)
Ground pressure	94,7 kPa (13.7 psi)
Track pitch	228,6 mm (7.48 in.)
<b>OPERATOR STATION</b>	
ROPS	ROPS (ISO 3471 - 2008)
FOPS	FOPS (ISO 3449 - 2005)



POWERTRAIN			
TYPE		EPA Tier 3/EU Stage IIIA	
Transmission		Single stage 410 mm (16 in.) torque converter with a 2.45:1 stall ratio drives to transmission through a triple universal joint. Modular, countershaft type power shift transmission, electro-hydraulic control. Preset travel speed selection and auto-downshift.	
Steering		Exclusive 2-speed geared steering module provides gradual turns while maintaining full power to both tracks plus conventional clutch-brake performance for tight or pivot turns. Coupled to 3-speed transmission, the 2-speed steering provides 6 speeds forward and 6 reverse. The left hand joystick controls transmission and steering drive for up and down shifting, steering, Hi/Lo selection and LH/RH gradual turn.	
Final drives		Double-reduction planetary type final drives mounted independently of track frames and dozer push frames for isolation from shock loads.	
Maximum drawbar pull		665 kN (149,498 lbf)	
Travel speeds		Forward	Reverse
1st	Low	3.0 km/h (1.9mph)	3.7 km/h (2.3 mph)
	High	3.9 km/h (2.4mph)	4.7 km/h (2.9 mph)
2nd	Low	5.1 km/h (3.2mph)	6.2 km/h (3.9 mph)
	High	6.6 km/h (4.1mph)	8.0 km/h (5.0 mph)
3rd	Low	7.8 km/h (4.9mph)	9.5 km/h (5.9 mph)
	High	11.0 km/h (6.8mph)	13.3 km/h (8.3 mph)
Brakes			
Service		Spring applied hydraulically released multi-disc wet brakes. Foot pedal linkage control.	
Parking		The steering brakes also act as service and parking brakes. Service brakes are locked automatically when the transmission safety lever is actuated or when the engine is cut off.	

SERVICEABILITY	
TYPE	EPA Tier 3/EU Stage IIIA
Refill Capacities	
Fuel tank	830 l (219 US gal.)
Cooling system	58 l (15.3 US gal.)
Engine oil	33 l (8.7 US gal.)
Transmission system	257 l (68 US gal.)
Final drive, each side	64 l (16.9 US gal.)
Hydraulic reservoir	130 l (34.34 US gal.)
OPERATING WEIGHTS	
Type	Rigid
Base machine with Semi-U blade, lubricants, coolant, full fuel tank, standard track, ROPS/FOPS cab, operator 79 kg (175 lb) and single shank ripper	40 000 kg (88,184 lb)
Optional Components	
Ripper w/3 shanks	+600 kg (1,323 lb.)







MACHINE DIMENSIONS	
TYPE	EPA Tier 3/EU Stage IIIA
Type	Rigid
A Overall height - FOPS cab	3 750 mm (12 ft. 3 in.)
A1 Overall height - Beacon	3 955 mm (12 ft. 11 in.)
A2 Overall height - end of exhaust pipe	3 898 mm (12 ft. 9 in.)
B Grouser height	76 mm (3 in.)
C Ground clearance	575 mm (22.6 in.)
D Overall length, base machine	5 053 mm (16 ft. 6 in.)
E Track length on ground	3 245 mm (10 ft. 7 in.)
F Width over track	2 800 mm (8 ft. 2 in.)
G Track gauge	2240 mm (7 ft. 3 in.)
	TD-25M (EPA Tier 3/EU Stage IIIA)
Blade Type	Semi-U
D1 Length with blade and drawbar	6 528 mm (21 ft. 4 in.)
D2 Length with blade and 1-shank /	8 410 mm (27 ft. 6 in.)
F1 Width over trunnions	3 260 mm (10 ft. 7 in.)
BLADE SPECS	
Type	Semi-U
SAE capacity	9.6 m <sup>3</sup> (12.5 cu. yd.)
H Blade height	1 760 mm (5 ft. 9 in.)
I Blade width	4 050 mm (13 ft. 3 in.)
J Blade lift height	1 270 mm (4 ft. 2 in.)
L Blade digging depth	600 mm (23.6 in.)
M Maximum tilt	880 mm (34.6 in.)

RIPPER		
	Parallelogram ripper with hydraulic pitch adjustment	
	TD-25M	
	Standard	Multi-shank (3-shank)
R Maximum clearance under tip (raised)	937 mm (36.9 in.)	793 mm (31.2 in.)
S Overall beam width	1 314 mm (51.7 in.)	2 428 mm (95.6 in.)
T Slope angle (fully raised)	31.4°	30.0°
U Ripping width	-	2 240 mm (88.2 in.)
V Spacing center to center	-	1 120 mm (44.1 in.)
X Maximum penetration	1 250 mm (49.2 in.)	915 mm (36.0 in.)
Z Maximum pitch adjustment	26.2°	25.5°
Penetration force	135.4 kN (30,439 lb.)	141.8 kN (31,877 lb.)
Pryout force	207.5 kN (46,647 lb.)	207.5 kN (46,647 lb.)
Shank positions (vertical)	4	2
Weight of ripper incl. shank(s)	3771 kg (8314 lb.)	4326 kg (9,537 lb.)
Weight of shank	487 kg (1074 lb.)	314 kg (692 lb.)



# STANDARD EQUIPMENT

## ENGINE

### TD-25M (Tier 3)

Engine, CCEC QSNT-C375S30, EPA Tier 3/EU Stage IIIA, emission certified, turbocharged, direct start, direct injection, 280 kW (375 hp)  
Air cleaner, dry type with turbo air precleaner and electronic service indicator  
Antifreeze, -34°F (-37°C)  
Cooling module; includes radiator, transmission oil cooler, hydraulic oil/fan drive oil cooler, fuel cooler, charge air cooler (CAC); isolation mounted  
Coolant filter conditioner  
Exhaust resonator with elbow  
Fan, hydraulically driven, suction type, variable speed  
Filters, engine oil, full flow and by-pass with replaceable "spin-on" elements  
Fuel strainer  
Muffler, under engine hood, insulated  
Water separator, fuel system  
Filtration system for contaminated fuel

## DRIVETRAIN

Torque converter, single stage  
Transmission, power shift, 3 speeds forward, 3 reverse, combined with 2 speed steering provides 6 speeds forward, 6 reverse, preset travel speed selection and auto-downshift  
Steering, planetary type, 2 speed, left hand single lever control (joystick)  
Filters, power train, equipment hydraulics, "spin-on" micro glass type  
Brakes, foot, spring applied, hydraulically released  
Decelerator - right foot pedal, and brake - center foot pedal

## OPERATOR'S ENVIRONMENT

Air conditioner/heater/pressurizer/defroster, behind roof mounted  
AM/FM radio with Bluetooth® and USB socket  
Cab ROPS/FOPS integrated, sound suppression, 4 wipers w/washers, inside mirror, dome light, tinted safety glass, 2 sliding side windows, rear glass heated, air recirculation system, (approved according to ROPS - EN ISO 3471 and FOPS - EN ISO 3449)  
Mirrors, 2 pcs, exterior  
Seat, air suspension type, fabric cover, adjustable, high back, fixed 15° to the right  
Arm rests  
Seat belt (EN ISO 6683) - 3" wide, retractable  
Sun visor for front cab window  
Fire extinguisher  
First aid kit

## INSTRUMENTATION

### TD-25M (Tier 3)

Electronic Monitoring System, LCD display:  
Normal and diagnostic operating modes for engine and drive train, hourmeter, gear, range  
Gauges: voltmeter (battery charge), drive train oil temperature, fuel level, coolant temperature, tachometer (engine rpm)  
Engine and drive train diagnostics program indicator lights  
Warning lights: engine ECM status, drive train oil high temperature, low coolant level, low engine oil pressure, high coolant temperature, low fuel level, high exhaust system temperature, battery charge level, low transmission clutches oil pressure  
Warning lights - filters: air cleaner filter, fan drive system filter, hydraulic oil filters, drive train pressure filter  
Audible alarm for low coolant level, low engine oil pressure, high coolant temperature  
Rear view camera  
Integrated rear view camera display

## ELECTRICAL

Alarm, back-up  
Alternator 105 A (Tier 3)  
Batteries (4) 12 V, 1920 CCA, cold start, maintenance free  
Beacon light, rotating  
Horn, electric  
Lights on cab, cab side mounted - 2 LH & 2 RH; 2 rear, LED  
Lights with guards, 2 front - lift cylinders mounted, 2 rear - fuel tank & hydraulic tank mounted, LED  
Portable lamp receptacle, 12 V  
Receptacle, starting/charging plug  
Starting, 24 V  
Starting aid - air grid heater (Tier 3 only)

## UNDERCARRIAGE

Sprocket, segmented - 8 segments each side  
Track adjusters, hydraulic  
Track chain, sealed and lubricated (LTS) with split master link, 38 links (Tier 3)  
Track chain guides, integral  
Track frame, 7 roller, 2 140 mm (84") gauge, oscillating type, lifespan  
lubricated rollers and idlers  
Track shoes, 560 mm (22"), grouser type

## GUARDS

Crankcase, hinged, with front pull hook, transmission, fan, radiator, sprocket  
rock and dirt deflector  
Engine hood, solid, sloped  
Engine side doors, hinged, perforated type  
Final drive seal guard  
Radiator guard doors, louvered, two-piece, hinged

## HYDRAULIC CONTROLS

3-spool valve, 1 lever with pilot operated blade control (lift/tilt), ready for ripper

## OTHER STANDARD EQUIPMENT

Cylinders, lift, with quick drop valve  
Diagnostic centers for power train and equipment hydraulic pressures  
Drawbar, fixed  
Ecological drains for engine oil, radiator coolant and hydraulic oil  
Manuals: parts and operator's  
Maintenance tool kit (includes grease gun)  
Shovel, fuel tank mounted  
Rear access platform  
Tools compartment  
Vandalism protection, one key for all locks



# OPTIONAL EQUIPMENT

## BLADE EQUIPMENT

**D-2 Semi-U Dozer**, 9.6 m<sup>3</sup> (12.5 yd<sup>3</sup>), complete with all blade components, blade includes reinforced center push plate, with hydraulic tilt and manual pitch or hydraulic tilt/pitch

## REAR MOUNTED EQUIPMENT

**Drawbar**, counterweight, 1 860 kg (4 100 lbs)

Additional counterweight (cast), 2 004 kg (4 410 lbs); recommended for use with large coal or landfill blades

**Ripper, multi-shank** with three shanks, partially mounted, with hydraulic pitch, includes deduct for drawbar, includes additional ripper light, LED, ripper frame mounted

**Ripper single-shank beam**, with hydraulic pitch, standard or deep dig, with electro-hydraulic pin puller and shank, partially mounted, includes deduct for drawbar, includes additional ripper light, LED, ripper frame mounted

## TRACK SHOES

610 mm (24") shoes

660 mm (26") shoes, clipped corner

711 mm (28") shoes, clipped corner (not recommended for use with ripper)

## OPERATOR'S ENVIRONMENT

### For use with cab:

- Air recirculation system with MSHA filters, severe service
- Heated mirrors, 2 pcs, exterior
- Seat, heated, air suspension type, fabric cover, high back, adjustable (includes empty seat sensor and belt sensor)
- Sun visors (2), additional, for side door windows
- Additional cab lights, 2 front, LED

## GUARDS

Final drive rock guard

Radiator door screen, for coal application

Track roller guards, full length

Transmission and engine crankcase guards, severe service

Electrical winch for engine crankcase guard

Electrical winch for transmission guard

Engine hood, perforated

## ADDITIONAL OPTIONS

Emergency brake release system

Ether start (only Stage V)

Exhaust pipe, chrome

Fast fill - fuel tank

Inspection lamp, 12 V, portable, with 6 m (20') cable

Sound suppression package, for use with std solid or perforated hood

Starting/charging receptacle plug assembly (required to jump start or charge batteries) with 15 ft cable

2000 h maintenance package (filters)

## EXPORT PACKING

Export packing, drive-on/drive-off, machine on the trailer

Export packing, drive-on/drive-off, machine on the railway wagon

## FACTORY FIT OPTIONS

Centralized Lubricating System, for machine with or without ripper

At Dressta we take pride in innovating to help our customers to achieve more in the jobs they do. Our dedicated team of application engineers can customize designs, modify standard equipment and adapt attachments for peak performance in specific application tasks, improving productivity and bottom line results.

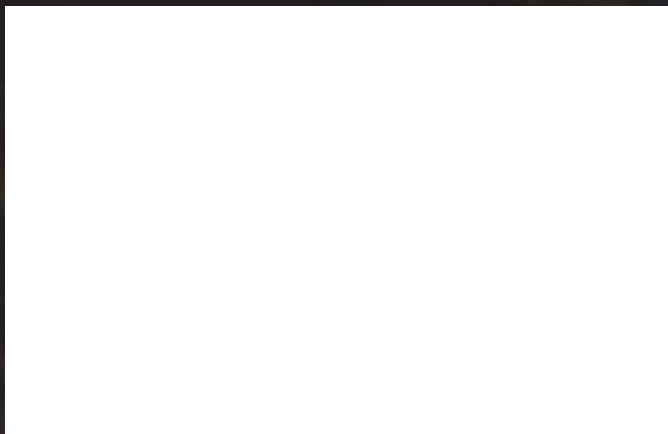
**Do you have a Special Feature Request? See how Dressta can help you achieve more in the jobs you do.**





**LiuGong Dressta Machinery Sp. z o.o.  
Grabskiego 48, 37-450 Stalowa Wola**

**email: [info@dressta.com](mailto:info@dressta.com)**



**DR-PB-TD25M-T3-20-27042023-ENG**

The LiuGong series of logos herein, including but not limited to word marks, device marks, letter of alphabet marks and combination marks, as the registered trademarks of Guangxi LiuGong Group Co., Ltd. are used by Guangxi LiuGong Machinery Co., Ltd. with legal permission, and shall not be used without permission. Specifications and designs are subject to change without notice. Illustrations and pictures may include optional equipment and may not include all standard equipment. Equipment and options varies by regional availability.